

# BYGONE TIMES

A Newsletter of the TROUTDALE HISTORICAL SOCIETY

November, 1996

Sharon Nesbit, Editor, 665-0423

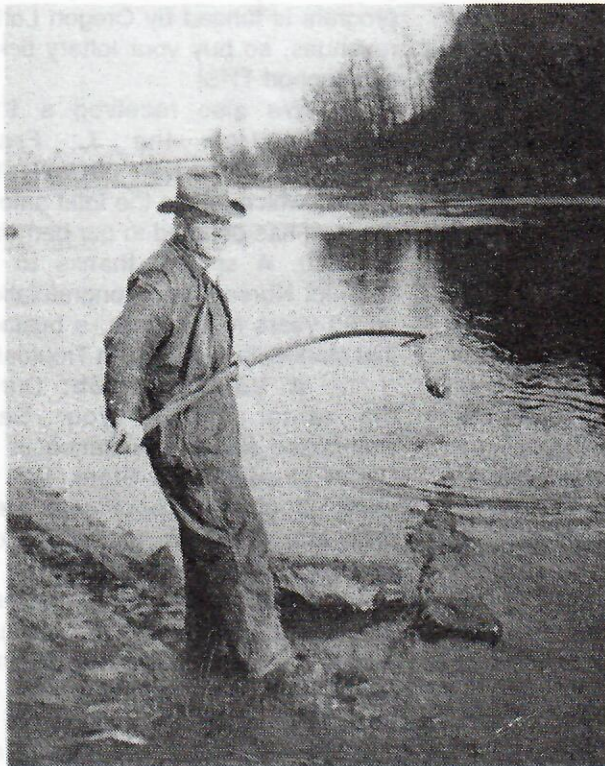
## A chat with Ted Schulte, Sunday, Nov. 17, city hall



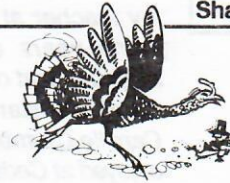
Ted Schulte is one of those folks who has countless stories about Troutdale. He knows smelt. He knows about Troutdale Sand & Gravel. He knows about vegetable farming and pony clubs. And As

long time treasurer of our historical society, he knows about our organizational history.

We'll tape an oral history interview with Ted at our **Nov. 17 meeting, 1:30 p.m., in Troutdale City Hall.** Because of scheduling problems for city hall, this date is a change from the one announced in last month's newsletter.



As you are aware, the barnstorming committee is working on a smelt exhibit as a prototype for the first exhibit in our barn museum. The picture above, recently donated by the Mitchell family, shows Austin Low dipping smelt on the Sandy in the 1940s.



## CALENDAR for November

### Events

- Sun., Nov. 17, 1:30 p.m., city hall**  
Live oral history interview with Ted Schulte:  
smelt, farming, Troutdale Sand & Gravel
- Sat., Dec. 7, noon -4 p.m., Harlow House**  
Christmas at the Harlow House with Santa

### Barnstorming

- Sat., Nov. 9, 9 a.m., barn**  
Barnstorm committee plans smelt exhibit
- Wed., Dec. 11, 6:30 p.m., barn**  
Barnstorm committee meets with exhibit designer

### Board of Directors

- Wed., Nov. 6, 7 p.m., barn**
- Wed., Dec. 4, 7 p.m., barn**
- Wed., Jan. 8, 7 p.m., barn**

### Opportunities

- Sat., Nov. 30, 10 a.m., Harlow House**  
Decorating the Harlow House for Christmas
- Mon., Jan. 14, 1997, 7 p.m., barn**  
Steering committee, works on Harvest Faire  
and Ice Cream Social
- Wed., Nov. 27, Friends of Zimmerman House,  
noon, barn**  
Restoration of Zimmerman House at 171st & Sandy

### Harlow House

November through May, Sat. & Sun., 1 to 4 p.m.  
Christmas decorations, throughout December

### Depot Museum & Store

Nov.-Dec., Saturday, 11 a.m. to 4 p.m., Sunday, 1 to 4 p.m.

## Christmas gifts at museum store, End of the Line. See flyer inside.

What's this flyer in your newsletter? It's a sampling of what's available at our End of the Line Store, located in the Depot Museum. During November and December, we're open 11 a.m. to 4 p.m. on Saturdays and 1 to 4 p.m. on Sunday.

Come in and do your Christmas shopping, make someone happy and support the Troutdale Historical Society.

For volunteer work at store, see Page Two.





**TREASURER'S REPORT**

FROM PENNY BALCH

Operating Acct.....	\$16,576.32
Barn Funds.....	14,399.97
Endowment Fund.....	23,169.28
Director's Fund.....	2,374.74
Bingo Fund.....	1,958.73
<b>TOTAL.....</b>	<b>\$58,479.04</b>

This report reflects the \$20,000 from the estate of John Nasmyth for the barn building fund and exhibits in the building, as well as \$23,000 in our endowment, money dedicated to the future of our society.

**GIFTS**

**TO THE BARN FUND**

**From Judy Jones and the A Team at Tad's Chicken n' Dumplins from Harvest Faire and Mike Dubesa**

**In Memory**

**Virginia Murphy**

Virginia Murphy, who became a Harlow House host when she sold her Gresham clothing store, Pauletta's, died recently. Murphy hosted the Harlow House for several years.

**Margaret Grimm**

Margaret Grimm, wife of the late Arthur Grimm, and a member of this society, died a few weeks ago.

**A gift**

to the endowment fund  
in memory of  
**Marilyn Oakes,**  
first president of Troutdale  
Historical Society,  
from **Helen Otto**

**More memories of a fine teacher**

We received two letters, both from educators, in regard to the late Camille Crumb.

From Mary Bryson: *"She was my teacher at Cedar School, oh so many years ago. School was an important part of my life. I attribute the wonderful start of my education to Camille Crumb and the experiences I enjoyed at Cedar School."*

And from Larry Callister: *"Here's a donation in memory of 'Mrs.' Crumb (I can't call her Camille!) for the endowment fund. This handwriting is a product of her teaching, as she was my first and third grade teacher at Troutdale back in the early '60s. She really was a fine teacher."*

*She may not have done so all 45 years of teaching, but for me and my classmates (truly her 'best classes') she took the time to send us all a postcard from her travels over the summer before school began in September. What a thrill it was to get one from your teacher! Perhaps she incorporated them into a lesson plan on using maps or some such educational function, but I just remember how cool it was to get it in the mail. I still have one of the postcards in my archives somewhere. I believe it came from Venice or somewhere in Italy.*

*I also vividly recall her showing up one year in a brand new hot yellow Dodge Barracuda, perhaps a '62 or '63 model, the ones with a big sloping rear window. I recall discussing with my chums about such an old lady driving such a hot muscle-type car. Of course, now I realize she was only about 55 years old at the time, which doesn't sound so ancient anymore!*

*Thanks for your efforts in keeping alive the memories of such a fine teacher."*

**A gift**

to the endowment fund  
in memory of  
**Mrs. Crumb**  
from **Larry Callister**



**Words from the Director**

Special thanks to the Summer 1996 Harlow House and Depot and Museum Store volunteers for manning (and womanning) the museums all summer. And, thanks to those of you who will be working this winter at the Harlow House and Depot Museum/Store.

Those at the Harlow House will be: **Mary Hughes, Judy Bronkey, Mario Ayala, Martha Boocheister, Jack & Roberta Burns, Ellen Graber, Florence Baker, June Nasmyth, Barbara Mabry and Sharon Nesbit.**

We received a \$336.81 grant from the **Oregon Tourism Commission**, the maximum amount given to any museum this year. This program is funded by Oregon Lottery revenues, so buy your lottery tickets and support THS!

We also received a \$100 donation from the **J. Frank Schmidt Family Charitable Trust**, which brings the total amount the trust has donated to our barn fund to \$650. A special thanks to the Schmidt Nursery and congratulations on 50 years in business, a business that started, incidentally, in Troutdale.

**A Volunteer Job:** During the winter months your Sales Committee needs assistance at the Depot Museum and Store. We will need about three people to wash, prep and paint the green (bottom) portion of the museum half of the building and to wash, prep and paint the floors. This does not require ladder work and will go surprisingly fast. If you can donate a few days, call 661-2164 and leave a message for me. We will do this in February and March.

Don't forget to consider our End of the Line Depot Store, open weekends in November and December, when you do your Christmas shopping.



## A letter from Helen Althaus

Helen, who grew up on Sweet briar Farm, now lives in Ashland.

*"I was especially interested in the "cliffhanger of a staircase" down Beaver Creek Canyon, Aug. 7 Outlook article. "Decades ago when I was still a teenager, Bob Strebin led several of us youngsters down into that canyon perhaps about in the same area where the new staircase is located. It was exciting and beautiful, I remember some exquisite wildflowers, somewhat orchid-like, but not lady slippers, much larger, beige or dull yellowish in color. Perhaps they were called dog tooth violets. Why didn't I keep a diary of all these things?"*

*"The column beginning with the 1916 Stark Street Extension to the upper Sandy Bridge did ring a bell in my memory. You mention local farmers filing claims against the county for damages to their property. What I remember my mother telling me is that one local farmer, Sam Strebin, and my grandfather, Emmet B. Williams, voluntarily dedicated a large portion of the Base Line (Stark) Extension to the county and the public."*

### Around the House...

**At the Harlow House...** It's a subtle change and not noticeable at first, but a big job was recently finished at the barn when we hired a contractor to finish the battens and hay door on the front. The board ruled that the lofty job was just too high a risk for volunteers.

While we were at it, we had George Z. put a deadbolt on the basement door, for security's sake, and boost our sagging back door.

Now if we just knew a plumber willing to fix a small, but pesky leak in the basement.

And, we still seek a picky person willing to give an hour or two a week to check on house and barn needs and call for repairs.

*Don't tell us it's art...*

## Graffiti strikes house, park

Vandals with paint cans, apparently coming down the canyon path from Strawberry Meadows defaced our gazebo, gazebo bench, park signs and Oregon Trail historical marker with green paint in mid-October. The same persons did even worse damage at Glenn Otto Community Park on the Sam K. Cox Building and the historic Staten gas station.

Many thanks to city parks employees who came out and painted over the damage less than an hour after it was reported.

Perhaps because of our years of work with school students, the Harlow House has escaped this kind of damage. We regret that the people who did this have so little regard for our history.

## Cat in right place at the right time



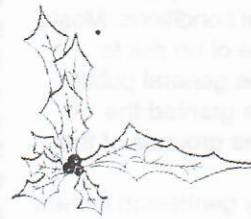
On Tuesdays Dick Anderson, neighbor to the Harlow House, checks our garbage can and puts it out for the garbage man, if necessary. Several weeks ago he found at the back door of the Harlow House a pitifully crying kitten.

Anderson summoned his wife, Carol, and now the Andersons have two cats. So much for doing good deeds.

## Harlow House Christmas plans are coming along

A unique twist of the calendar this year causes our normal day to decorate the Harlow House to fall on Saturday.

This event is so fun that in the past Mona Mitchoff has taken a day off from work to help out. The Saturday date this year, 10 a.m. on November 30, is an opportunity to invite all who have have a talent for decoration to deck the halls.



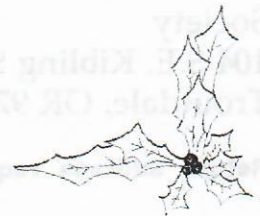
Ellen Brothers plans a pre-decorating party to make the ornaments, this year clear

glass balls filled with potpourri. Want to help? Leave a message at 661-2164.

We'll need a pot of soup, of course, in memory of Alex Jones who always made soup for the decorators. If you can do that, leave a message as well.

And we'll need folks to decorate the tree, put up greens, get the lights on the porch and all the rest. If you plan to

trim greens that time of year, put a bunch in a bag and leave it on the porch that



day. We never have too many. It's a fun time, so consider joining us.

Our Sat., Dec. 7, Christmas at the Harlow House celebration -- the one with cookies, wassail and Santa-- coincides with events in downtown Troutdale. Mark the day.

Also, the Harlow House in Christmas dress will be the site of the winter gathering of Oregon Press Women with Dave Ripma and Sharon Nesbit officiating.

**We are still looking for a curator, a person who likes to organize, to work with our artifact collection. Call 661-2164 and ask for a job description.**



# The Soloist.....

by Walter Nasmyth

During the 1930s there were many of the inhabitants of the County Farm at Troutdale who suffered from some form of dementia. The talk in Troutdale was that the syphilitics suffering from paresis were housed there. Which, of course, was pure conjecture on the peoples' part, for dementia comes in many forms and can be caused by a variety of both physical and mental conditions. Most of the "guests" were of no risk to themselves or to the general public, therefore they were granted the freedom to leave the grounds of the farm at will.

One elderly gentleman inmate must have loved classical music for he spent hours each day during the summer months playing his violin. He was deeply engrossed in his music the first time my brother, Herb, and I saw him.

He was seated on a bank near the southeast corner of the railroad overpass that crosses the Old Columbia River Highway just west of Troutdale. As we slowly approached he was so engrossed in his music that he totally ignored our presence and continued to play his violin.

We watched in silent fascination as we listened to him play. He continued to play as though he were on stage in some far away concert hall playing to an appreciative audience. We strained to hear the music but the only sound we could hear was the harsh rasp of two sticks rubbing together that he used for his violin and bow. For some years the lonely soloist could be seen around the vicinity of the County Farm playing to his imaginary audience. Then one day his concert ended, as did his life.

A sad but true story of one of the guests of the County Farm at Troutdale.

Name  
Droppers

Thanks to **Maude Winning** for organizing our school reunion meeting Oct. 20 and to the folks who attended and coped with the change in location. Sorry about that, a lost date on the city hall calendar was to blame...Also, welcome to **Merle Coons** who came from Pocatello, Idaho, for the reunion. Glad to have you join us...**Bob & Mona Mitchoff** hosted an event Oct. 21 that our steering committee has come to call the Wine and Whine. The potluck dinner with a glass or two of wine is used to wind down from Harvest Faire and to critique our events so we can improve on them next year...**Sharon Nesbit** is guest speaker at the annual meeting of Human Solutions at McMenamins Edgefield, Nov. 6. Her talk -- "Edgefield as a human solution."

Troutdale Historical Society  
104 S.E. Kibling St.  
Troutdale, OR 97060

Return address requested



An interview with **Ted Schulte**, Nov. 17, 1:30 p.m.  
Troutdale City Hal

BULK RATE  
U.S. POSTAGE  
PAID  
TROUTDALE, OR.  
PERMIT NO. 5



The Troutdale Historical Society's

# End of the Line

· MUSEUM STORE ·

Sat 11:00 - 4:00  
Sun 1:00 - 4:00  
(503) 667-8268

## Located in the Troutdale Rail Depot

The store specializes in decorative, practical, and artistic items consistent with its theme of "Trains and Trout". Listed below are just a few of the unusual gift ideas you might consider.....at the same time helping your Historical Society.

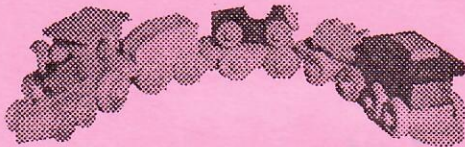
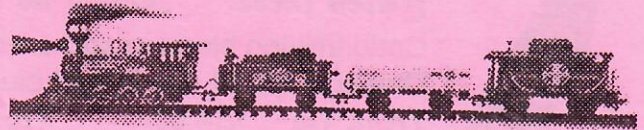
### Large Scale Electric Train

#### *Beautifully detailed Toy...*

Battery operated, this is a wonderful first train. Makes actual train sounds, smoke comes out of stack. Light actually works. Set includes

locomotive, tender, gondola and caboose. Track sets up to over 4 feet by 8 feet. The locomotive and cars total almost 3-1/2 feet in length. Circus Train (not shown) also available. Includes locomotive plus 3 cars (totalling over 4 feet in length), and four animals (lion, tiger, seal, and elephant). Plays 5 tunes.. Batteries not included with either train.

**Toy Electric Train \$78.00      Toy Electric Circus Train \$95.00**



### Hand-crafted Wooden Toy Train

#### *Beautifully Hand-crafted by Bill Jackson*

This hand crafted toy train is made by the Troutdale Historical Society's own Bill Jackson out of selected woods.

The train measures 21 inches in length, and includes the locomotive, tender, flat car (with removable roadster), tank car and caboose. the cars are interchangeable, and the wheels turn. **Hand-**

**crafted Wooden Toy Train \$28.00**

### Pencil Sharpeners

#### *Exceptional detail in miniature!*

Die-cast metal pencil sharpeners in antique bronze finish. Averaging approximately 3 inches in length, they have exceptional detail which doesn't show in these pictures. Assorted styles, including Antique Touring

Car, Locomotive, caboose (pictured), Covered Wagon (pictured), Spinning Wheel, Statue of Liberty, Lantern, Victrola, Coffee Grinder, Bellows Camera, Liberty Bell, and Oil Lamp. Most have some moving part.

**Die-cast Metal Miniature Pencil Sharpeners \$2.00 each**



### Hand-crafted Wheatstraw Ornaments

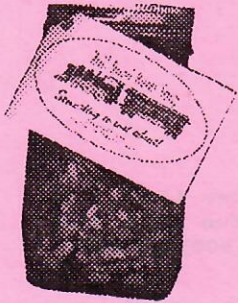
#### *Beautifully detailed! Assorted styles and colors...*

Skilled artisans in Mainland China have created these special ornaments. Dyed wheat stalks are slit, ironed into flat strips and joined to form a sheet. Tiny pieces are then cut out and carefully glued to create unique pieces of art. Every scale on the fish is a separate piece! Done in bright, translucent colors, these would be a

fitting addition to your (or a friend's) tree. Each measures from 3 to 5 inches long.

**Assorted Wheatstraw Ornaments \$4.50 each**





## Rail Road Bean Soup

*Something to Toot About!*

Only available from the Troutdale Historical Society. This bean mix is based on a tried & true recipe. Colorful label in red, green, and black depicting a locomotive and passenger car. Assorted colorful beans in reusable canning jar. Available in pint and 1/2-pint sizes. Recipe included. **Pint \$4.00 1/2-Pint \$2.50**



## Trout Sox & Tie

*Catch these... There's no limit to the fun!*

Cotton/Nylon blend in socks with full-color rainbow trout on each foot. One size fits all. Tie is light blue and matches the umbrella below.

**Trout Tie \$14.00 Trout Sox \$5.75 per pair**



## Trout Umbrella

*A must for the fisherman...*

Beautifully screen-printed underwater view of rainbow trout. Large 48-inch umbrella has wood handle and shaft with brass-finished details. Very classy and very practical gift.

**Trout Umbrella \$25.00**

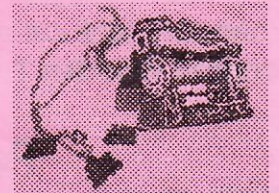


## Railroad Watches and Jewelry

*A collection of special gifts for the train buff!*



The reproduction railroad watch (shown left) and the pewter jewel box (right) are just a few of the railroad-related gift items carried at the store. The watch comes in assorted styles in silver- and gold-like finishes, with deep relief engraving of a railroad scene on the front and floral design on the back. The jewel box lid is actually a brooch, and comes with a miniature locomotive necklace and matching earrings.



**RailRoad Reproduction Watch \$17.50**

**Pewter Jewel Box \$8.00**

## Fine Jewelry

*Columbia Legends Collection*

The Sterling Silver Columbia Legends Collection are made in The Dalles, OR, and are based on ancient legends of the Gorge. The Sturgeon pin, shown here, also may be wore as a necklace, and comes with a silver chain. Matching earrings are also available.

**Sterling Silver Sturgeon Broach \$30.00 Matching Earrings \$30.00**

*And Much, Much More.....*

The museum store carries Troutdale Historical Society pins and T-shirts. Other items include custom-made note cards by Sharon Nesbit, gorgeous pen and pencil sets made from rare woods by Bill Jackson, and even some of Sam Cox's peacock feathers. Also available are pictures and paperweights, railroad alarm clocks (that sound like an old steam locomotive) and unusual art objects sure to please that railroad or fishing fan.



***All Proceeds Benefit the Troutdale Historical Society***