

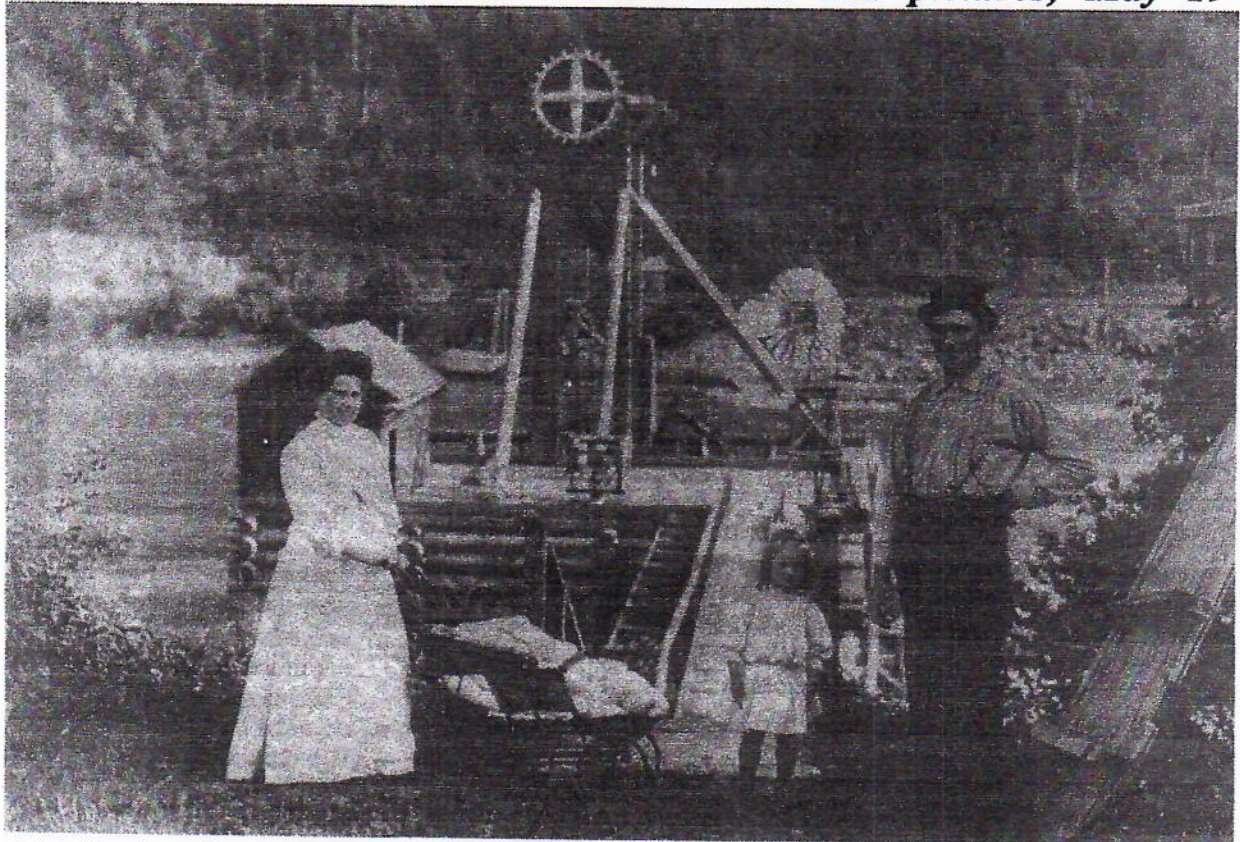
# BYGONE TIMES

A Newsletter of the TROUTDALE HISTORICAL SOCIETY

May, 1996

Sharon Nesbit, Editor, 665-0423

## *Fishing on the Columbia : Fish stories and pictures, May 19*



Erick Enquist, who would later be mayor of Troutdale, is shown with his family at the fishwheel he tended on the Columbia River near Latourell.  
Troutdale Historical Society Photo

Our good friends, Steve Lehl and Chuck Rollins, from Crown Point Country Historical Society bring a program of stories and photos on fishing in our reach of the Columbia River at 2 p.m., Sunday, May 19, in Troutdale City Hall.

Rollins and Lehl, who also led the campaign to save Bridal Veil, are two fine Columbia Gorge researchers and historians. (They also will have a report about Bridal Veil at our May meeting.) Their slide program and stories cover fishing from Troutdale upriver including the fishing practices of Native Americans, the heyday of the fishwheels, gill netting and seining.

This is the time we honor our Member of the Year and make plans for the ice cream social. We also invite other local historical societies to join us and let us know what they've been doing. Please be there. Though summer keeps us busy with festivals and the running of our museums, the May program concludes regular winter meetings. Those gatherings resume in the fall with a Troutdale School Reunion on Sunday afternoon, Oct. 20. Mark your calendars.

\*\*\*\*\*

### INSIDE THIS NEWSLETTER:

*How to get ready for Ice Cream Social --- News of our members --- A story about a grandmother's hands --- Word on the opening of our Museum Store*



# Here's a Scoop: Ice Cream Social Coming June 15 & 16

Your June newsletter will contain up-to-date news on ice cream social. However, here are things we are need to make our 28th annual social a success:

## Antique Cars

Barbara Mabry, 661-8704, is hunting antique cars, trucks and pickups to lure visitors to Harlow House and the depot. We plan to set aside the curved drive in front of Harlow House and the lawn in front of the depot to show vehicles. Car owners may either stand by their vehicles, or we will provide a watchful person to look over them. Our goal is to have cars during the entire event, 11 a.m. to 4 p.m., and to assure that some can be present, even in rain. We especially want a pickup or truck at the depot.

## Sponsors

Waste Management of Troutdale, formerly Ege Sanitary, has kindly offered to pick up where the Ege brothers left off by sponsoring one day of music at the social. Don Curtis has secured a sponsorship from Handy Bros. and a number of other donors as well.

## Volunteers

Florence Baker, 665-9656, is rounding up volunteers for the two-day event. We need Harlow hosts, barn hosts, social hosts, set-up folks, clean-up folks and servers to help our Job Corps scoopers. Can you help little kids freeze ice cream? Clean berries on Saturday night? Help decorate Friday night?

## Plants & Flowers

We need flowers for decorating (plan on bringing them Friday night, June 14) and if you can pot up extra things from your garden for our plant sale, Marge Schmunk, 666-7706, would be most appreciative.

## Vendors

Know a crafty person who would like to sell at the social? Have them call Jean Holman, 665-7678.

## Signs

Got a good spot for a sign? Call and leave your name and address at the Harlow House, 661-2164. We will regard that as permission to place a sign.

## TREASURER'S REPORT

from Penny Balch

OPERATING ACCT	\$ 7,975.82
DED. BARN FUND	150.00
BARN BUILDING	24,475.87
ENDOWMENT FUND	22,174.20
DIRECTORS FUND	2,336.23
BINGO FUND	1,958.73
TOTAL.....	\$ 59,070.85

( This reflects \$20,000 from the estate of John Nasmyth for the barn and exhibits, as well as more than \$22,000 in our endowment fund dedicated to the future of our society.)

## GIFTS

OPERATING FUND  
Jim & Irene Eber

## In memory:

*Lucile V. Howell*

Lucile V. Howell, 83, died March 9 of a stroke and pneumonia. She grew up in Troutdale with her family. Survivors include her brothers, Donald E. (Chim) of West Linn, Warren of Gresham and Wallace of Richland, Wash.

## GIFTS

TO THE ENDOWMENT  
FUND

W.R. & Donna Gibson

*In memory of*

*Bobbie Armstrong*  
Ed & Vera Ashley

*In memory of*

*Dorothy Linden*  
Weir Owens

Thanks: To Lois Moller for a donation of Green Stamps --- To Bob Strebin, Mona Mitchoff, Sharon Nesbit and Bud & Marilyn Neubarth for cleaning day work on April 20.



Florence Baker

## Longtime member takes board seat

Just in case you never have, meet Florence Baker, who took a position on our historical society board of directors in February.

Florence is a longtime volunteer host at the Harlow House. She risked hantovirus exposure a couple years ago when we cleaned up a mouse invasion in the basement. She helps decorate the Harlow House Christmas tree. She calls our volunteers for Harvest Faire and Ice Cream Social and she travels on every one of our treks.

Widow of Bill Baker and mother of son, Bob, she is a farm wife and a historian who has raised berries and pumpkins, pressed the best homemade cider in the world and still lives on the farm on Troutdale Road.

## And a quiet word on our mystery trek

Only one seat remains our May 18 Mystery Trek to ????

This we do know, cost is \$40 a person, including donations, admissions, transportation and a dinner. Plan to bring spending money and a lunch. Those who have made reservations, should secure their seats with a check for that amount, if they have not already done so.



**Original version of My Little Pony:**

Thanks to Shirley Yost for this remarkable picture of a beautified horse from her family photo collection.

The horse was exhibited, likely at the Oregon State Fair, by her great uncle Charlie Holtgrieve, a fruit grower, who won blue ribbons at various fairs, including the 1905 Lewis & Clark Exposition.



**CALENDAR**

for May

May 9, Thurs., 6:45 p.m.: Bingo, Glenn Otto Community Park.

\*\*\*\*\*

May 13, Mon., 7 p.m.: Steering Committee, planners of Harvest Faire and Ice Cream Social, in the barn.

\*\*\*\*\*

May 16, Thurs., 6:45 p.m.: Bingo, Glenn Otto Community Park.

\*\*\*\*\*

May 18, Mystery Trek, 9 a.m.: Departs Troutdale City Hall. Returns 8:30 p.m.

\*\*\*\*\*

May 19, Sun., 2 p.m.: Fishing on the Columbia River, a program in Troutdale City Hall. Final meeting of winter.

\*\*\*\*\*

May 23, Thurs., 2 -5 p.m.: Anniversary party at McMenamins Edgefield with reception for local historical groups and former Edgefield workers.

\*\*\*\*\*

May 23, Thurs., 6:45 p.m.: Bingo, Glenn Otto Community Park.

\*\*\*\*\*

May 29, Wed., 7 p.m.: Steering committee doing fine tuning on Ice Social, barn.

\*\*\*\*\*

May 30 Thurs., 6:45 p.m.: Bingo, Glenn Otto Community Park.

\*\*\*\*\*

June 5, Wed., 7 p.m.: Board of directors, barn.

\*\*\*\*\*



**VOLUNTEER OPPORTUNITIES**

Frustrated exhibit designer needed to coordinate temporary displays in Harlow House, working with collectors to display their items, as well as exhibiting Harlow House artifacts.

Individual with instincts of a librarian to be curator of our museum collection, labeling, filing and storing artifacts. Need typing, organizational skills, possibly working part of the time as a museum host.

A committee chair for the Harlow House. No cleaning, no dusting, just someone to check once a week on needed repairs, burned out light bulbs, fresh flowers, dry plants and to coordinate events in the house.

An engineer or a conductor to do the same for the Depot. Working on future exhibits, polishing the current exhibit and planning changes.

**You are invited to anniversary party at McMenamins Edgefield**

McMenamins Edgefield celebrates the third anniversary of the opening of the Main Lodge May 23 with a reception for former Edgefield workers and local historians in the lodge from 2 to 5 p.m.

Though the room is not yet been designated, guests may inquire at the desk for the Edgefield employees' reception. Sharon Nesbit will sign copies of the Edgefield history.

Our society will display some Edgefield memorabilia.



### **Delicious brunch, poor attendance**

Those who stayed home from our May 5 Brunch to watch a ridiculous display by the Trail Blazers missed a lovely meal.

The poor attendance, about 100 people, will cause us to rethink our brunch and whether or not it or a breakfast like it should, perhaps, coincide with another of our events.

However, that in no way, decreases our appreciation of those who worked so hard on it. The cooks, Jim & Jean (dishwasher supreme) Rhodes, John Kerlake (Mitzie was home with a bad back), Fich & Dorothy Kerlake and Margaret Overgaard. Add to that our chairwoman Florence Baker helped by Dave Ripma, Jean Holman, Dorothy Sturges, Laura Van Atta, Penny Balch, Sharon Nesbit, June Nasmyth, Sam Cox and Evelyn Jacobson. See our Namedroppers column for more contributors.

### **Namedroppers**

While we're at it, say thanks to these folks who brought salads and desserts to the brunch: Jean Holman, Dorothy Sturges, Florence Baker, Sharon Nesbit, Evelyn Jacobson, Dorothy Kerlake, Nancy Cox, Gladys Norment, Marie Stone, Helen Tamura, Nancy Holland, Martha Booheister, Jeral Beaty, Shirley Yost, Jo Callister, Laura Van Atta, Barbara Mabry, Mike Dubesa, Helen (just turned a new grandmother the night before) Towsley, Clover Nasmyth, Sue Davis, Betty Knight and Mary Hughes. And to Helen Tamura for donating flowers and to Cathy Warren for planting them.

Our April 20 brown bag sale did not net huge profits but produced its most desirable result—we got rid of stuff in the barn and folks paid us about \$145 to haul it away. Thanks to Jean Holman, Mona Mitchoff, Sharon Nesbit, Dorothy Sturges, Barbara Kempton, Dick Jones and Bob Strebin. The profits yielded more than enough to buy a shop vacuum for the barn.

### **Genealogist at Edgefield hunts, finds ancestor**

Last fall Ron Owens of San Diego, Calif., showed up at McMenamins Edgefield because he learned that his great grandmother died at the poor farm.

Following a trail he ended up at at Portland funeral home and cemetery where he asked where grandma was buried. The nice folks there looked it up, then admitted that granny wasn't in the cemetery. She had been cremated and was still in storage. No one had every claimed her ashes.

Owens took his great-grandmother home on the plane.

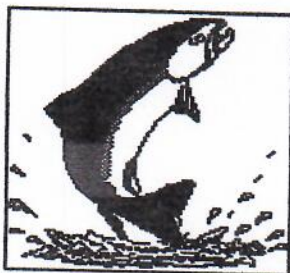
### **Membership News**

**New Members:**  
Laura Van Atta & Judy Bronkey

**In Director's Club:**  
Lois Moller & Helen Tamura

**TROUTDALE  
HISTORICAL SOCIETY  
104 S.E. KIBLING STREET  
TROUTDALE, OR 97060**

**BULK RATE  
U.S. POSTAGE  
PAID  
TROUTDALE, OR.  
PERMIT NO. 5**



All about fishing on  
the Columbia River:

**Sunday, May 19  
2 p.m.  
Troutdale City Hall**

Bill & Sharon Nesbit  
623 Buxton  
Troutdale, OR 97060