

BYGONE TIMES

A Newsletter of the TROUTDALE HISTORICAL SOCIETY

May, 2000

Sharon Nesbit, Editor, 665-0423

A grave undertaking: our May 21 road trip

Meet 1 p.m. at City Hall

Our second annual cemetery road trip leaves Troutdale City Hall at 1:30 p.m. on Sunday, May 21. This will be our last regular program of the year.

Once again, Stan Clarke, Multnomah County cemetery historian, will lead us



to cemeteries in Gresham, Gresham Pioneer, White Birch, Escobar, and St. Josephs, pointing out interesting graves and tenants in those historic cemeteries. Clarke was recently named to the state's Pioneer Cemetery Commission.

We gather at 1 p.m. to conduct business and make announcements and leave on the bus at about 1:30 p.m. We have rented a big yellow school bus for the occasion and will pass the hat to cover expenses. Who knows? Maybe an ice cream stop is in order.

Speaking of ice cream...

Thirty-second ice cream social and time line dedication, June 2 & 3

An early berry season just might bring fresh strawberries for our 32nd annual ice cream social, Saturday and Sunday, June 2 and 3, 11 a.m. to 5 p.m.

At noon Sunday, we will pause to dedicate our time line and barn workshop and then celebrate with ice cream -- banana splits, fresh strawberry shortcake, sundaes, as well as hot dogs, coffee, and popcorn. A plant sale is planned from 11 a.m. to 4 p.m. both days. Snyder & Opdal, folk and traditional musicians, will perform. Music times are 1 to 4 p.m.

How to help Connie VanCleave and her committee?

- ***Bring flowers at 5 p.m. Friday, June 1.
- * * *Volunteer. Call Adrienne Clausen, 663-0895, or Harlow House 661-2164.
- ***Get in touch with Jean Holman, 665-7678, for a craft or vendor booth at the event.

CALENDAR/May & June Meetings & Events

Thur-Sat, May 18-20, Spring Trek
THS travels to Baker City & Beyond
A three-day trek along the Oregon Trail to Baker City, Ontario, Pendleton and Union. Seats open, call 661-2164.

Sunday, May 21, 1 p.m.
Cemetery Tour with Historian Stan Clarke
Troutdale City Hall departure, 1:30 p.m.
Bus tour of Gresham historic cemeteries, led by Oregon cemetery historian Stan Clarke. We will pass the hat to help cover the cost of the bus.

Sat. and Sun., June 3 & 4, 11 a.m.- 5 p.m.
Annual Ice Cream Social
Glenn Otto Community Park, Harlow House and Barn, Rail Depot Museum and End of the Line Museum store.

Wed, June 7, 6 to 9:30 p.m.
A Vintage Evening at the Poor Farm
Pouring of a specially labeled wine and a dinner and auction celebrating the 10th anniversary of McMenamins Edgefield and Troutdale Historical Society's role in saving the poor farm.



Board of Directors

Wednesday, May 3, 7 p.m.
In the barn. All members welcome
Wednesday, May 31, 7 p.m.
In the barn. All members welcome

Beginning Sat., June 3, Summer Hours: Harlow House

Wed-Sat., 10 a.m. to 4 p.m., Sun., 1-4 p.m.
Rail depot & museum store
Tues-Sat., 10 a.m. to 4 p.m., Sun., 1-4 p.m.

Inside:

VINTAGE NIGHT
AT THE POOR FARM,
A WINE MADE IN
TROUTDALE AND BOTTLED
AND LABELED JUST FOR US



**Bid on these items
at our June 7 party**

Original artwork from both **George Dinan** and **Mark Larsen** of Pacific Crest Gallery in Troutdale.

A birthday party at a **Gresham Fire Dept.** fire station.

A nature scaping session from **Val Lantz.**

A massage from **Christina Balsiger.**

A bouquet of flowers from **Malcoms for Flowers, Jack Malcom.**

A tour of gorge in an antique auto and lunch at Forest Hall from the **Pat Brothers and Pat Gregory.**

Tea party for for 4 on the porch of Harlow House from **Jean Hybskmann.**

Certificate for golf for two at **Gresham Golf Course.**

Certificate for large Blimpie sandwiches at Gresham's soon to be opened **Blimpie Sandwich Shop** by Nick & Barbara Welsh.

Bonzi Wells trading card.

A stay for two at Brickhaven Bed & Breakfast from **Ed and Phyllis Thiemann.**

Art glass from **Chris Corcoran** at Edgefield...

Treasurer's report

by **Pat Smith & Penny Balch**

Operating Fund	\$ 10,357.92
Barn account	4,458.92
Director's Fund	5,000.00
Capital Imp. Fund	7,346.40
Endowment Fund	41,818.45

Towns by the numbers:

According to the Gresham Outlook in 1940, preliminary results of the census in East County indicated that Gresham's population jumped from 1635 in 1930 to 1945 in 1940.

In Fairview, the population had grown from 184 residents in 1920 to 305 in 1940.

Troutdale's news was bleak. The population slipped from 227 in 1930 to 216 in 1940.

June 7, at McMenamins

Vintage Evening at the Poor Farm

We expect a night of jubilation, great fun and and congratulation when we celebrate the 10th anniversary of McMenamins Edgefield, and the role of the Troutdale Historical Society and the McMenamins brothers in saving the old county poor farm.

The time is from 6 to 9:30 p.m. in Blackberry Hall, McMenamins Edgefield.

Our dinner that evening, \$50 a person. is a fund-raiser for our historical society and the first time we will pour Poor Farm Pinot Gris, an estate bottled wine made from grapes grown in the vineyard right in front of of the Edgefield. Our historical society gets a \$1 from sale of each bottle.

Sharon Nesbit and artist Lyle Hehn collaborated on a special label for Poor Farm Pinot Gris so when we get to the part where it says, "scrappy little historical society," you will know just what historical society we are talking about.

Before, during and after the festivities we will have an auction of treasures and some nice opportunities donated by our friends in the community. Part of that list is at left.

Mary Bryson and Jean Hybskmann are organizing the event. If you would like to attend, or if you have something to offer for the auction, please call them at 661-2164.

**A report from
Grannies Attic**

Connie VanCleave and her crew likely made about \$400 at their Grannie's Attic sale in Glenn Otto Community Park April 8.

Our thanks to Connie, Mona Mitchoff, Florence Baker, Dorothy Sturges and Marilyn whose name escaped the press release, but she's a friend of Connies.

**Sid Britton dies
at the age of 99**

Sid Britton, longtime resident of Troutdale, and former mayor and town marshal, died March 22 at the age of 99, a few months short of his 100th birthday.

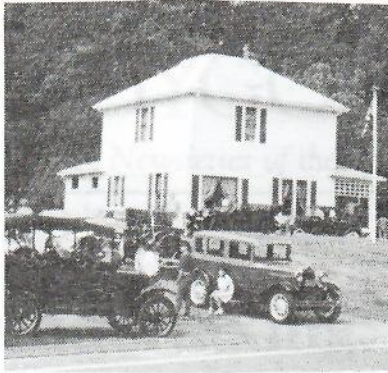
While driving a truck in South Dakota, he took an electrical correspondence course at night, studying by a light hooked to the truck battery. He moved to Oregon in 1936 and to Troutdale in 1946 where he and his brother-in-law, Harold Moffatt, formed Moffatt and Britton Electric Co. He helped build Cherry Park Presbyterian church and remained active well into his 90s, giving up his driver's license at the age of 94.

Namedroppers

For a year now our society and others in the area have advised **Gloria F. Boyer** on formation of a **Damascus Historical Society.** Boyer has done her homework and recently incorporated the society to serve the historic interests of Damascus, Boring, Rock Creek, Sunnyside, Carver, Happy Valley, Clackamas and Barton. Her phone number is 658-5916, if anyone wants to get in touch...**Connie Purvis, Mary Bryson & Sharon Nesbit** turned the clock back to 1931 at our April meeting enacting a newspaper interview with Troutdale's women mayors, Clara Latourell Larsson (Bryson) and Laura Harlow (Purvis.) **Ginger Harlow Allen,** Laura's granddaughter, and other family members were present. So was **Jack Malcom,** who remembered Clara Larsson...A treasure of Troutdale stories and war memories came to us from **Walter Nasmyth** who wrote two memoirs, one on growing up in Troutdale and the other on experiences in the South Pacific in World War II. Look for these tales in the future...Stop by the Harlow House to see how **Michele Rosenberg** replanted the herb garden and English cottage garden...Also, the skunk cabbage blooms again in the old pond site ...

Harlow House -- 100 years

This is a continuing series on the history of the Harlow House, 100 years old this year, and the people who made a home in the house. Previously, we outlined the occupancy of Fred and Minnie Harlow and then Lou and Laura Harlow. The third and last family to own follows in this segment.



Lee and Mabel Evans 1940-1978

Benson Lee Evans and Mabel Clair Brink were both children of pioneer families in the Troutdale and Corbett area. Lee, as he was called, was born in 1884, son of Sylvester Evans, a pioneer family of the Corbett area. Mabel was said to be the first white girl born in Troutdale. Her birth date, 1891, would indicate that she was the first child of newcomers to the newly-platted town of Troutdale, born in the year that Troutdale was being constructed on the new city lots on the hillside. Mabel and Lee Evans were married in 1911. She was a teacher and a music teacher. He worked in lumber and trucking. They had two children, a daughter, Ruth Sundling, also a music teacher who survives, and a son, Jack Evans, deceased, who worked at the Troutdale Post Office. Ruth was married on the front lawn of the Harlow House. In 1922 the Evans built a new home in Troutdale, now the Dalton Williams home, immediately north of the Harlow House. Local residents say Evans tore down Captain Harlow's old home to build the new one, which was quite nice and expected to cost \$8,000. In 1922, however, Evans lost his warehouse and garage to a fire, that also claimed two trucks, a car and bus parked inside. Tragically, there was also a fire in the new house when it was under construction.

The setback of the fire and The Depression sent the Evans to the family farm in Howard Canyon at Corbett to regroup. Their home was purchased by Dr. Tomlinson who used it as home, office and hospital. In 1940, the Evans returned to Troutdale buying the Harlow House from Laura Harlow, by then a widow.

The Harlows, said Ruth Sundling, were "excellent" friends of the Evans, and Mabel Evans was delighted to be moving into the home. Mabel treasured Troutdale's history and in fact, wrote a history of Troutdale.

Mabel and Lee widened the door to the rear parlor to accommodate a grand piano, eventually adding the plate glass window to light the room. The piano, which sat on the interior wall of that room. Troutdale children came for piano lessons and many of our guests still comment that music lessons were their introduction to the home. Ruth Evans Sundling would remember a heritage of music, her mother singing and playing, her father always whistling. The Evans were exquisite dancers and he called it square dances.

Lee Evans died in 1965. Mabel lived until the age of 87, moving out of the house one year before her death in 1979.

(Concluded next month.)

Curator's Corner

from Mary Bryson

Gifts this month include a photo of the 1938 Wool Pullery crew from Robert Salathe and from Jean Robinson Torland who sent this treasure to add to our collection, a post-1950 menu from Tad's Chicken and Dumplings. Check out the prices.

ORIGINAL CHICKEN AND DUMPLINGS

Plump, tender, colored chickens, boiled in crystal pure spring water, with steamed cloud-like fluffy dumplings, family style, with relish, vegetable, drink and dessert \$1.75

Special Chicken 'n Dumplin' Plate \$1.35

Service for Children under six years on Family Style
Chicken Dinners (includes Drink and Dessert)50

PAN FRIED SPRING CHICKEN

The best milk fed spring chicken available, prepared with whipping cream, fried golden brown, with the flavor all there. Served family style, with relish plate, hot rolls, home made jam, shoestring potatoes, drink and dessert \$2.50

Creamed Giblet and Noodle Plate, with
Vegetables, Hot Roll, Jam and Drink . . . \$1.00

TAD'S SPECIAL DINNERS

RELISH PLATE
FRUIT OR TOMATO JUICE COCKTAIL OR WINE
SOUP DU JOUR
DINNER SALAD

ENTREES

	<i>Dinner</i>	<i>Ala Carte</i>
Grilled Loin of Pork Chops	1.75	1.25
Deep Fried Spring Chicken, CHEF'S STYLE . . .	2.25	1.75
Willapa Oysters, French Fried, Lemon Wedges	1.90	1.40
TAD'S Fish and Chips, Special	1.50	1.00
Hamburger Steak with Potatoes	1.75	1.25
Ham or Bacon and Eggs with Toast	1.50	1.00
Grilled Young Salmon Steak, French Fries . .	1.60	1.10
Choice Tender 16-oz. Steaks on Sizzling Platter—		
New York Cut	4.75	4.25
Filet Mignon	4.75	4.25
Tenderloin	4.75	4.25
T-Bone	4.00	3.50

Welcome to the Director's Club

Mary & Dennis Bryson, Nancy Cox, Marlene Burns & Jon Dickinson, Donna Hawkins, Jean Holman, Walter & Lorraine Mackey, Lois Moller, Bill & Sharon Nesbit, Frieda & Dennis Ryland and Ed & Marge Schmunk.

In memory of Sid Britton

Ruby Mathieson

Gifts to the Endowment Fund

Dennis & Frieda Ryland, Walter & Lorraine Mackey

Gifts to the General Fund

Lucy Coleman, Jo and Vaden Callister

Troutdale Historical
Society
104 S.E. Kibling Street
Troutdale, OR 97060

BULK RATE
U.S. POSTAGE
PAID
TROUTDALE, OR.
PERMIT NO. 5

OUR SECOND ANNUAL
CEMETERY ROAD TRIP
MAY 21



Profile: Marge Schmunk
by Arlene Wands

Sometimes you just have to jump in and get your feet wet.

"What else was I going to do?" asked Marge Schmunk. She of "Trout and Trains" fame; she of the tough, non-nonsense demeanor; she who suddenly found herself chief cleaner, proprietor and purchaser for Troutdale's "End of the Line" railroad depot gift shop – well, what else could she do, indeed?

Marge, one-time Troutdale city council and planning commission member, had no idea she was going to grow up to run a railroad-depot gift shop.

She could, with a certain affection, be called "irascible." One gets the impression that Marge does *not* suffer fools gladly. But mention the "End of the Line" gift shop – and "crusty" becomes "cream puff." She is proud of that shop. It has become her....well, her *baby*.

The "birth" of the depot gift shop actually took place several years before.

"When Ellen Brothers was alive," said Marge, "opening a gift shop was an idea we both had. We started this place on a shoestring, and with a lot of help from a lot of people – including our husbands." As a matter of fact, it was Ellen's husband, Pat, who christened the fledgling gift shop *End of the Line*. Creative guy he, he also penned the slogan "trout and trains" for the shop's theme. "We have trout on one end and trains on the other!" Marge explained.

The Union Pacific Railroad sold the old train depot to the city of Troutdale in 1976, for the princely sum of \$1.00. The station agent's office came with the depot, and included a desk and furnishings that were *nailed* to the floor.

As for the gift shop area, "There was *nothing* in here," said Marge. "Just an empty room. So we painted it and put in shelves and made due with what we could. We started out with wooden crates and suitcases – those were our displays!"

While the Historical Society maintains the building, Marge cleans it, arranges it, prepares it for opening and

attends national trade shows to stock it. These days, visitors to the "End of the Line" can find trout and train-themed gifts, including, says Marge, "trains of all sizes, shapes and colors!"

The best part of the job? "Oh, the visitors!" said Marge. "Just this morning, I had a man here from South Carolina, waiting for the shop to open. You meet a lot of fascinating people." Marge loves it when the school kids come to visit. *Especially* when the train goes by. "I'll shout 'it's coming!' and we all run outside," said Marge. "They love to wave at the train!"

"By the way, Marge added, "our new caboose offers the *perfect* 'Kodak moment' for parents and grandparents. Bring your camera!" And she welcomes volunteers to put in a few hours at the End of the Line. "It's a fun job!" said Marge. "Lots of interesting train folks."

Stop on by. Ask Marge about the times Uncle Walt's chickens and peacocks used to wander the streets of Troutdale. Find out what *the most* commonly-asked question is at the depot. And wave at the train!