

BYGONE TIMES

A Newsletter of the TROUTDALE HISTORICAL SOCIETY







November, 1997

Editor, Sharon Nesbit, 665-0423

On November 16 -- a talk with the berry growers

Don't miss our 2 p.m., Sunday, Nov. 16, meeting in Troutdale City Hall when we video tape an oral history interview with the area's berry growers.

We have invited local berry farmers -- Strebin, Baker, Dix, Fujii, Townsend -- most retired now, but a few still in the business, to talk about the industry, the woes with pickers, wino buses to Burnside, berry fights, berry prices, drought and disease.

Strawberry  Marion berry  Blackberry 
Raspberry  Strawberry  Marion berry 

In one of those oversights where you can't see the forest for the trees, we find that our Troutdale Historical Society photo files are short on berry farming photos, so we invite everyone with pictures to bring them -- write your name and address on the back with a pencil, please.



"Nutcracker Christmas"

opens Dec. 6 at the Harlow House



Please bring a plate of favorite Christmas cookies noon to 4 p.m., Sat., Dec. 6 for an opening reception with Santa Claus and a display of nutcrackers from the collection of Outlook publisher Bill Hunter.

Be the first to own this year's Harlow House Christmas ornament.

Then to Mayor's Square for the 4:30 p.m. lighting of Troutdale's Christmas tree followed by more festivities



CALENDAR November/ December

Events

Sun., Nov. 16, 2 p.m., city hall

The Berry Growers, an oral history and video-taped interview of local berry farmers

Sat., Dec. 6, noon-4 p.m., Harlow House

Opening reception of Nutcracker Christmas followed by city tree-lighting at Mayor's Square.

Board of Directors

Wed., Nov. 5, 7 p.m., barn

Wed., Dec. 3, 7 p.m., barn

Opportunities

Sat., Dec. 3, 9 a.m., Harlow House

Decorating the Harlow House for Christmas

Harlow House

November through May, Sat. & Sun., 1 to 4 p.m.

Christmas decorations, throughout December

Depot Museum & Store

Nov.-Dec., Saturday, noon to 4 p.m., Sunday, 1 to 4 p.m.

News Bulletins

PGE Foundation gives \$300

Thanks to our volunteer Frieda Ryland, a PGE employee, we have a \$300 matching grant to buy materials and photos for the Troutdale time line exhibit in our barn museum. Our time line will tell the story of major events in Troutdale from exploration on. Frieda proposed our request to her employer and Deb Cook prepared the grant with help from Bob Strebin and Penny Balch.

Schmidt Family Trust makes barn gift

We have also received \$300 from the J. Frank Schmidt Family Charitable Trust which makes an annual gift to our barn as a contribution to our community. J. Frank Schmidt Jr. has reaped nearly every honor in the nursery business and most recently was named nurseryman of the year by a national nursery magazine. He and Evelyn started their business in Troutdale. Our member, Nancy Buley, works for the firm.

WORD FROM HARLOW HOUSE

A lovely new furnace and air conditioner -- price \$3,000 -- purrs to life each time our too-tricky -to-figure out thermostat signals, thanks to a gift of money from the City of Troutdale and a considerable volunteer effort.



Bob Witter recently installed our furnace. He was helped by **Mike Alderson**, a city employee and good friend who gave up his day off to help out. The

furnace installation was orchestrated by Bob Strebin who was assisted by **Bob and Mona Mitchoff** in getting the old furnace out.

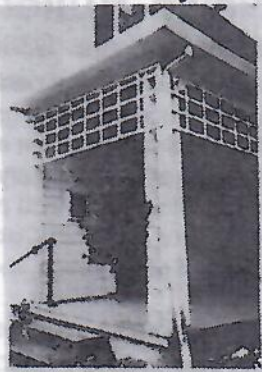
The vast new space created leaves plenty of room for **Marge Schmunk** to continue our campaign in cleaning and organizing the basement.

School reunion brings memories...

A particularly eloquent group of Troutdale school graduates recalled the teachers and fellow students they remembered best at our Oct. 19 meeting and school reunion.

Ernie Cereghino and his cousin, **Frank Cereghino**, stopped by to remind everyone that they were marking their 65th anniversary of their graduation from Troutdale Grade School. They both attended the old four-room wooden building and Ernie says it was no lie that the building had gaps in the siding so bad that you could see daylight through the walls. His most memorable person was R.D. Hewitt, who coached the basketball team and backed his players "even when they played dirty against Corbett."

Treasures at End of the Line....



You may be these photo cards of the Harlow House at our depot store through Christmas.

Hours: Sat., noon to 4 p.m., Sun., 1-4 p.m.

In the historic Troutdale Rail Depot

Meet our curator

Mary McGinnis Bryson



"How did you guys get so lucky?" Pat Stone asked last week. Stone is executive director of the Gresham Historical Society and a retired educator who is jealous because she knows the talents of Mary Bryson who recently retired from teaching English and agreed -- with characteristic good humor -- to become curator of the Troutdale Historical Society's collection of artifacts.

That job is not as exalted as it sounds. Her first task was to clear a space on her desk. Her second job was to clear a space on the floor. Then she discovered the table behind her is full of things as yet undone. (Not an awful lot has happened in the curator chore list since former curator Cathy Warren resigned.)

But Mary plugs away at the job, usually every Monday and Tuesday. (Good golf weather could change that schedule. It is one of the perks of being a volunteer.) Ordinarily, she does not hold the museum open on those days, because visitors tend to interrupt the process of numbering items and typing and filing cards on artifacts. One day when two intrepid tourists found their way in the front door she skipped downstairs to tell them the museum was closed -- interrupting to ask where the visitors were from. When they said North Carolina, Mary caved. "In that case," she grinned, "the museum is open."

Her roots go way back in Troutdale. She is the daughter of John and Miriam Spence McGinnis. Her dad owned the car dealership where Mayor's Square is. She and her husband, Dennis, former fire chief of the Corbett Volunteer Fire Department and a retired Reynolds High School counselor, have two sons, Andy, 30, and John, 32.

Before they moved to Springdale in 1971, the Brysons lived in the old David Buxton house, now gone, which was located uphill from the Plaid Pantry near what is now 257th Avenue.

"I walked into Andy's bedroom once and the whole floor had slipped down," she remembers. "It had a log foundation and the logs just disintegrated. Dennis got a jack and a pile of bricks and jacked it back up again."

Good experience for her work in the Harlow House.

Troutdale Historical Society Calendar for 1997-1998

November 16, Berry Grower Interview

Sunday, 2 p.m., Troutdale City Hall

An oral history and video-taped interview with local berry growers

Bob Strebin coordinating

December 3, Decorating at Harlow House

9 a.m. at Harlow House

December 6, Nutcracker Christmas

Opening reception, noon to 4 p.m., of Christmas at the Harlow House featuring the Nutcracker collection of Bill Hunter, Publisher, Gresham Outlook with Santa Claus and refreshments followed by city tree-lighting ceremony, Mayors Square.

The Harlow House in Christmas finery open each Saturday and Sunday afternoon, 1 to 4 p.m. each weekend in December.

January 18, Diary from the Whitman Massacre

Sunday, 2 p.m., Troutdale City Hall

Lynn Renner, Vancouver, descendant of Sager family.

Alice Wand coordinating

February 15, Annual meeting, 30th anniversary

Sunday, 2 p.m., Troutdale City Hall

An interview with Garthe Brown -- Long ago days in Troutdale

Len Otto/Connie Purvis coordinating

March 15, Geology of Troutdale and Columbia River Gorge

Sunday, 2 p.m., Troutdale City Hall

Maude Winning coordinating

April 20, History of Troutdale Airport

Sunday 2 p.m., Troutdale City Hall

Maude Winning coordinating

May 18, The Doolittle Store

Sunday, 2 p.m., opening with a reception at

Oregon Country Quilt & Fabric (former Doolittle Store.)

Sharon Nesbit coordinating.

June 6 & 7, 30th Annual Ice Cream Social & Anniversary party

Glenn Otto Community Park, 11 a.m. to 4 p.m.

Sept. 26 & 27, Harvest Faire

Glenn Otto Community Park, 11 a.m. to 4 p.m.

Other things you need to know:

Harlow House phone number:

(503) 661-2164

Troutdale Rail Depot phone number:

(503) 667-8268

Winter hours, Harlow House, Nov-May
Saturday & Sunday 1-4 p.m.

Winter hours, Troutdale Rail Depot (thru December, 1997)
Saturday and Sunday, 10 a.m. to 4 p.m.
January -April, closed.

Troutdale City Hall is at 104 S.E. Kibling Street, the corner of Kibling and the Historic Columbia River Highway in downtown Troutdale.

Harlow House Museum is at 726 E. Historic Columbia River Highway, the second house on your right past Troutdale City Hall.

The Rail Depot Museum and End of the Line Museum Store is at 473 E. Historic Columbia River Highway, across the street from Troutdale City Hall.

Glenn Otto Community Park, formerly Troutdale Community Park, is at 1110 E. Historic Columbia River Highway, at the Sandy River.

Director: Deb Cook, Telephone (503) 661-2164

President: David Ripma, 4220 S.E. Troutdale Road, Troutdale, OR 97060

Vice President: Mona Mitchoff, 29613 SE Kerslake Road, Troutdale OR

Historian: Sharon Nesbit, 623 Buxton, Troutdale, OR 97060

Harlow House Volunteer Coordinator: Jean Hybskmann, 870 N.E. 22nd Ct.
Gresham, OR 97030

Curator: Mary Bryson, 1812 S.E. Christensen Road, Troutdale, OR 97060

Barn Chairman: Bob Strebin, 2720 S. Troutdale Road, Troutdale, OR 97060

Photo Librarian: Beverly Welker, 4615 S.E. Haig, Portland, OR 97206

Video/Tape Librarian: Connie Purvis, 30485 NE Hurt Road, Troutdale OR
97060

Please write the Troutdale Historical Society at:

104 S.E. Kibling St.
Troutdale, OR 97060

or E-mail at: SNesbit@aol.com

Elsie celebrates her 80th



Elsie Simnitt celebrated her 80th birthday in August. At left shown in the ballroom at McMenamins Edgefield is Arthur Meger, Elsie (Meger) Simnitt, and son, Jerry Simnitt.

Helen Althaus receives more honors

Helen Althaus, longtime Troutdale council member and resident of Sweet Brier Farm, came to Portland from her Ashland home recently to receive honors from Oregon Women Lawyers. Althaus was one of the founding members of Queen's Bench, the Portland chapter of Oregon Women Lawyers. As such, her photo and biography are printed in a commemorative 50th anniversary calendar published by Queen's Bench. A descendant of 1851 Oregon pioneers, Helen grew up in Troutdale at Sweet Brier Farm. After working as a chemist during the war at Reynolds Metals, she chose a career in law because it held the promise of helping people settle disputes in a non-violent way. She was the first woman to serve as a law clerk to a judge in Oregon and the first woman member of the Oregon State Bar Public Information Committee. When she moved to Ashland, Helen, a lifelong theater buff, even got to do a little acting.

As an added note, Helen and a former Troutdale resident Bonnie Townsend Irwin met for lunch recently at McMenamins. Among the guests was Deborah Smith Snyder, Portland, who once taught Townsend at Cedar School and began her teaching career at Latourell School.

Harvest Faire draws about 1,500 --- and many good volunteers

Who do we thank for a successful Harvest Faire? Some 60 pie bakers? Our sponsors, Walsh and Sons Trucking, Reynolds Metals, Handy Bros. Service and Historic Columbia River Jeweler -- with liberal assists from Sandy River Orchards, Tad's Chicken N' Dumplings, Beararinos. How about the Boys Scouts, Girl Scouts and Campfire Girls who helped set up and take down, as well as our old-standby cleaner-uppers who showed up when they should.

Or there is Sadie Riley who made her chili and conducted her kitchen duties and hauled ailing husband, George, to the hospital for emergency surgery and saw him through his crisis all at the same time.

You have to remember the kitchen crew that Cindy Hammond gathers -- so well trained by now that even Hammond can't tell them what to do. And then you add Janet Vandiver, who jumped in to cook a ham dinner for us.

You have to add in the donors of hundred of gorgeous flowers. And the craft demonstrators at the Harlow House: Alice Wand, Dorothy Larson, Juanita Graff, Steve Lehl, Chuck Rollins, June Jones, Peggy Hart, Jean Hybskmann, and the volunteers who kept things humming there. Incidentally, all of our craft demonstrators with their pioneer skills come from Crown Point Country Historical Society in the Corbett area. In addition to splitting shakes, Chuck Rollins and Steve Lehl cleaned up and took away a pile of wood behind the barn that needed tidying.

Ultimately, it is vital to thank our steering committee which makes this festival as well as ice cream social and the Troutdale picnic hamburger booth happen: Chairwoman Mona Mitchoff and Florence Baker, Jean Holman, Dorothy Sturges, Cindy Hammond, Frieda Ryland, Kim Cook, Marge Schmunk, Mike Dubesa, Sadie Riley and Sharon Nesbit.

Just so you know....

Winners of the two \$50 gift certificates from Historic Columbia River Jeweler were Jean Torland of Vancouver, Wash., and Roberta Burns of Portland.

Mad hatters in The Dalles....



Penny Balch, Troutdale Historical Society treasurer, and Ellie Hermanson of Gresham Historical Society, had fun with hats in Klindt's Annex in The Dalles on our Sept. 20 Trek. Our bus included members of Fairview Rockwood Wilkes Historical Society.

Summer doldrums over; work pushes ahead for occupancy of barn

Bob Strebin, designated worrier and barn chairman, was frustrated with our progress at our barn museum during the summer because vacations and other delays slowed our work of getting an occupancy permit for our building.

In order to place our smelt exhibit in the barn -- that exhibit is being designed now -- we must finish a list of items that will bring us an occupancy permit from Troutdale building inspectors. That list includes such things as stair rails, some minor sheet rock work, window sills and so on.

Harvest Faire seems to have kicked the work back into high gear. Gerry Lambert came with his tractor and cleared and graded the rear lot where water was settling. The City of Troutdale has trenched the stream running from Strawberry Meadows, easing the threat of water breaching the berm. James Gurtison visited at Harvest Faire and before the event was over, was placing forms for the concrete pads at the door. (He also loaned us his table saw.) Mike Alderson also came to our aid in concrete prep work. Jim Murphy has done finish work on the stairs.

And, in a summer-long labor, Bob had a bargain purchase of steel shelves sand-blasted and has painted them in preparation for our artifact storage unit in the shop.

We are still a considerable way off, but movement certainly helps and we are indebted to all those who have pitched in in the departure of Dick Jones.

There are a number painting, finishing kinds of chores to do, and we desperately need someone to do the wood burning of the names of the donors on small wooden plaques. If you can help, call Bob and 665-2756.

Green stamps bear fruit

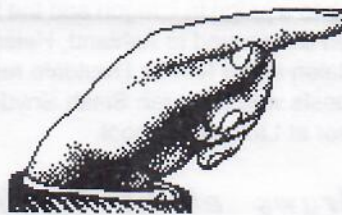
Remember all those S&H Green stamps you have been finding in cupboards and drawers and sending to us?

This week Curator Mary Bryson licked the last of the batch -- her taste buds will be dead for awhile -- and sent the whole works off to the Green Stamp catalog people -- \$22 worth of postage, plus a \$5 handling charge.

What will we get back? Let us count the goodies -- a cordless electric drill for the barn, with a battery pack, a digital answering machine that is adjustable so we won't kill ourselves getting to the Harlow House phone in two rings, a handy-dandy work ladder with a tool tray on top for chores in barn and house, three sturdy card tables for events, a 30 cup coffee maker and -- with the spare change -- three door mats.

We had a total of 242 books, which brings us more than \$600 in merchandise.

Says Mary, "It's just like Christmas."



Consider these ways to help out

Budget shortfalls have kept us from feeling flush enough to publish a new roster of membership for our society. However it wouldn't take too many business card ads or sponsorships at \$25 each to help pay the projected \$500 cost of a new roster listing all our members.

If you have a business that you would like our members to know about, we would include a reproduction of your business card at the bottom of one of the pages of our roster for a cost of \$25. Twenty such ad sponsorships would pay the costs of a roster. Interested? Call Deb Cook, 661-2164.

Another way of helping out would be to sponsor admissions to the Harlow House for a month. If your business or your family would like to help keep our doors open, a gift of \$100 would more than cover the modest admission fee we charge to visitors to the house. Instead of dealing with admission, we would post a sign: "Your admission is paid this month by the Tom Jones family." You might honor a parent or a the birthday of someone in the family with such a gift. Call Deb Cook, 661-2164.

**Troutdale Historical
Society**
104 S.E. Kibling Street
Troutdale, OR 97060

**BULK RATE
U.S. POSTAGE
PAID
TROUTDALE, OR.
PERMIT NO. 5**



**Put our Dec. 6 Harlow
House Christmas
Reception on your
holiday list**

**A Homemade Tractor -- product
of Troutdale's Cook's Garage**

The photo at right
is one from our
historical society
files and shows
Troutdale mechanic
Jim Cook with a
tractor he made out
of an old car.

Jim Cook was the
father our member,
also Jim Cook, and
grandfather of another
of our members, Kim
Cook. Kim, apparently
realizing that gramps
didn't get rich, entered
a different field.
She has volunteered
to create a marketing
plan for our society.

The wrecker, incidentally,
is a V-16 Cadillac.

