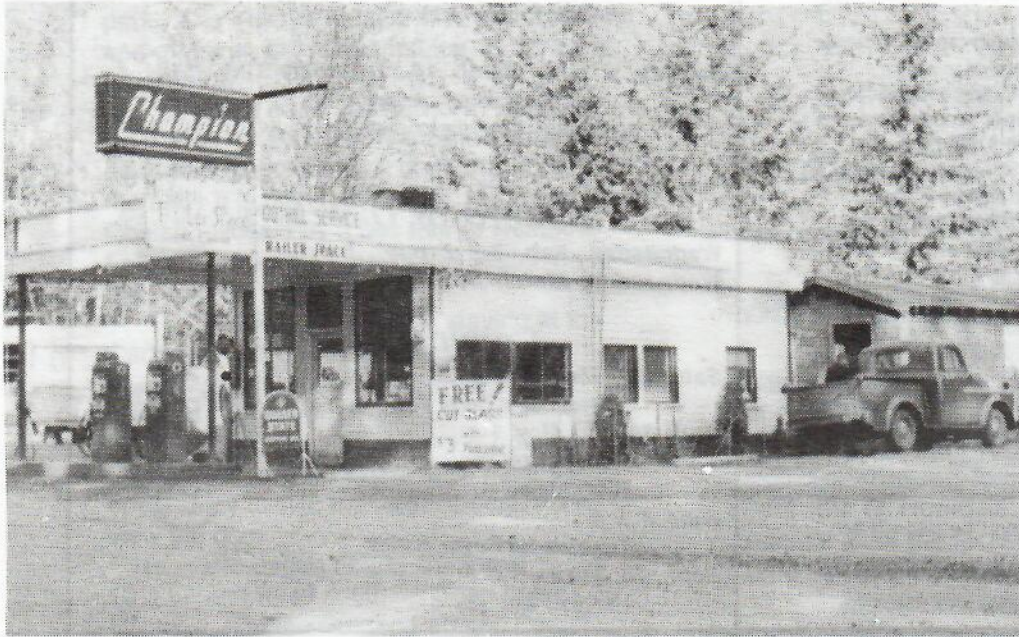


BYGONE TIMES

A Newsletter of the TROUTDALE HISTORICAL SOCIETY

February, 1999



Commercialism in the Columbia River Gorge, Oh My!

At 2 p.m., Sunday,
February 14,
a showing of
historic photos
of gas stations,
restaurants,
lodges, bars
on the old highway.

This photo picture from Troutdale Historical Society files shows Foothill Service, at the intersection of Woodard Road and the Historic Columbia River Highway on the Sandy River south of Troutdale. The station, owned by Nancy and the late Sam Cox, still stands but is not in operation. Note that a \$3 purchase brought you a piece of free cut glass.

Annual meeting, dues, election of officers, and a spectacular slide show, February 14

The Troutdale Historical Society has just one annual business meeting a year. This year, marking our 31st anniversary as an historical organization, we meet at 2 p.m., Feb. 14, Valentine's Day and Oregon's birthday, in Troutdale City Hall.

To entice you to attend, Steve Lehl and Chuck Rollins of the Crown Point Country Historical Society bring their collection of pictures of the business and tourist attractions that sprouted along the historic highway after -- and sometimes even before -- its dedication in 1916.

Our business meeting includes election of officers and the paying of annual dues. We will receive questions and suggestions regarding the good of the order and President David Ripma presents his annual State of the Society speech.



After the meeting a reception with refreshments will recognize our departing director, Deb Cook. This will be an opportunity to thank Deb for contributions of time and talent to our society.



If you have questions regarding the nominating committee and the election of officers, or if you have an interest in serving in an office on the historical society board, or one of the committees, please don't hesitate to call the Harlow House, 661-2164, and speak up. A slate of officer candidates for the Feb. 14 election appears inside this newsletter.

The Rememberers

By Sharon Nesbit

The first two months of the year, Hubs and I spend in Maui at our favorite place in Napili. For more than 11 years, it has been our refuge from Troutdale winters.

Just because you change locations, you don't quit being a historian. I have come to know Maui about as well as any part-time resident can. As for the Napili shore, it is my neighborhood. I walk it every day - just as when I am home I walk Troutdale. I stop often, as the Hawaiians say, to "talk story" with the locals.

One day last year on my morning ramble, I came to the piers at the far end of Napili Beach near where ancient Hawaiians gathered salt in round depressions carved in the rock. I came across two young men studying a series of concrete piers set in the rocky shore. They were discussing changes there, apparently at the request of the management of the hotel complex built along the bay.

Hoping they might know the original use of the piers, I slowed. I have never been certain of why the piers were there, but having read the history of the area, I theorized that they supported a dock for loading pineapple on the coast trading ships that visited these small bays. I stopped to ask.

One of the young men was local. The other a haole like me. The local guy said he thought it had been a dry dock for a private boat used by the resort. I pointed out that the 3 concrete piers were pretty hefty for that purpose and had no rebar, suggesting earlier construction, possibly for the pineapple plantation.

"It was no pineapple plantation," he said. "I live here and it has always been a resort."

When I told him the resort was built in the 1960s, and the plantation preceded it in the 1930s and 1940s, he shrugged.

"Wouldn't know," he said. "Wasn't here then."

It's hard to say where he was being rude, obtuse, or stupid. Either way, I resisted the temptation to say, "Neither was I," and moved on. The scope of his knowledge—limited to his lifetime—was not worth wasting my time. Every morning after that as I



Walked by the piers and past the ancient salt pits, the conversation replayed in my mind. I wonder at the silly shortsightedness of those who see no past but their own, and no future but their lifetimes. Likely the same disability that afflicted the computer programmers who never expected the year 2,000 to come around.

Have they never seen a salt pit carved out of lava by a woman who has been dead 300 years?

What finally came to me is that it falls to us to be the rememberers. That historical societies and museum keepers and writers and genealogists and storytellers and keepers of storied and people who save old things, whether they be vases or houses, are the rememberers of the community.

If you ask yourself, why be a member of the Troutdale Historical Society? Why clean strawberries, or host a museum, or work in the museum store, or sweep the barn, or write a check, or bake a cake, then the answer is that it is part of the work of keeping the memory. That's why we exist as an organization of individuals with views to the past. We are the rememberers. And because we are, we build part of the future.



CALENDAR for February & March

Meetings

Sunday, 2 p.m., Feb. 14, Troutdale City Hall
Commercialism in the Gorge, a slide show
Election of officers, annual meeting and
reception for Deb Cook.

Sunday, 2 p.m. March 14, Troutdale City Hall
Crimes, Casualties and Curiosities,
a program of curious local events by
Connie Purvis

Board of Directors

Wednesday, Feb. 3, 7 p.m., barn
Wednesday, March 3, 7 p.m., barn

Coming Events

Saturday, May 1, Tea & Tour,
Forest Hall at Bridal Veil

April 30 and May 1
Treasures of Oregon
in Troutdale

June 5 & 6
Troutdale Ice Cream Social

Sept. 18 & 19
Harvest Faire



Harlow House

Saturdays and Sundays, 1 to 4 p.m.
Depot Museum & Store
Closed for the winter

Gifts to the Endowment Fund

Jack & Marion Burns

honoring
Mary Allen
Bonnie Irwin

honoring
Sam Cox
Bill & Sharon Nesbit

honoring
Vernon Townsend
Bonnie Irwin

honoring
Lloyd Snell
Walter & Viola Nasmyth

honoring
Byron DeYoung
Bonnie Irwin

Gifts to the Barn Fund

Elsie Simnitt

In memory of
Ignatius Wand
Patricia Wand

Gifts to the Directors Fund

In memory of
Ellen Brothers
Mary Hughes

General Fund Donations

Lola Fellman
Elsie Simnitt
Lois Miller
Bonnie Irwin

Spring Trek Planned

Mark May 13, 14, and 15 on your calendar, and join us on our three-day Spring Trek. We'll be visiting some fantastic sites in the Washington Cascades.

We plan a stop in Yakima, where we'll enjoy a sack lunch picnic in the city park. The Yakima Museum faces the park and offers an old-fashioned ice cream parlor for dessert.

Then on to Leavenworth, where we'll stroll for about an hour and then we'll head for Lake Chelan. A boat tour aboard the Lady II is planned for May 14 on Lake Chelan followed by a bus tour to Rainbow Falls (312 ft.) which marks the beginning of the Stehekin Wilderness.

In Chelan we will be staying at the Caravel Resort, which is 86 steps to the nearest restaurant and has wonderful access to Riverfront Park.

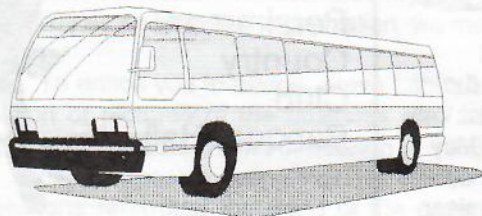
May 15 we have a short drive to Grand Coulee Dam where we'll have an opportunity to visit the visitor's center and view the dam.

We depart Grand Coulee at about 10 a.m. and head south for Soap Lake, Vantage, and the Ginkgo Petrified Forest Park and visitor center.

The price is just \$300 and includes one group meal and one box lunch.

Bob Strebin will speak on the geology of the Scablands on the return trip through the Scablands and Dry Falls areas of eastern Washington.

Make your reservations by calling Deb at 661-2164. She can answer your questions and reserve your spot.



EAST COUNTY HISTORICAL PICTURE BOOK

Look up pictures of your ancestors' homes. Find your relatives among the pages of this fascinating pictorial. Call Deb at 661-2164 and reserve your copy now. We don't know how much longer we will have them in stock.

Treasurer's Report 11/30/98

Operating Fund	\$8,968.43
Barn Building Account	\$6,845.30
Directors Fund	\$ 10.00
Capital Improvement Fund	<u>\$7,356.40</u>
	\$23,180.13
Endowment Fund	\$32,330.35
TOTAL	\$55,510.48

Students visit THS museums

During the past few weeks, several different student groups have visited the Harlow House, Barn, and Depot museums.

In January, a group of Tiger Cub Scouts from Corbett toured all three museums as a part of their tour of Troutdale. Deb Cook, director of THS, opened all of the facilities and conducted the tours on a Saturday morning.

Also in January, a group of 14 Gresham Cub Scouts lead by Den Mother, Adrienne Carpenter, toured the Harlow House and the Barn. Mary Bryson, curator of THS conducted the Harlow House tour and Director Deb Cook took the boys and their chaperones through the barn.

This past week three Reynolds High School history students and their families toured the Harlow House and Barn museums as part of an assignment for their history class. This tour covered everything from the basement of the Harlow House to the attic of the barn. The students were especially intrigued by the Civil War cannon ball in the Harlow House.

On January 30, a group of six Tiger Cub Scouts will be touring the Depot museum.

These visits by various student groups show just how important our museums are to different student groups.

If you have a group which would be interested in a tour of any of our facilities, please call Deb Cook at 661-2164 to make arrangements for your tour.

Help Wanted:

Part-time Director for Troutdale Historical Society.

Troutdale Historical
Society
104 S.E. Kibling Street
Troutdale, OR 97060

BULK RATE
U.S. POSTAGE
PAID
TROUTDALE, OR.
PERMIT NO. 5

COMMERCIALISM IN THE GORGE?



EVIDENCE IN PICTURES, FEB. 14

How we pay our dues

If this newsletter has an envelope attached, that means you owe annual dues. If you have not previously been a member, then it is our invitation to join our organization. Because we do not want cost to keep you away, **annual dues per individual are only \$8.** If you can afford more, we offer higher membership levels:

\$12 per couple
\$20 per family

Or, there is the Director's Club—a special membership level designed to help pay costs of our part-time paid director. It includes a nifty party for Director's Club members at Sweetbrier Farm, home of President David Ripma.

\$75 per couple
Or

\$50 an individual

If you want to give a donation, the envelope offers a spot to mark your choice of funds.

Tea and Tour May Day at Forest Hall

In remembrance of the hospitality of his late wife, Ellen Brothers, Pat Brothers opens Forest Hall, the southern-style home at Bridal Veil, for this year's Tea and Tour, May 1, 1999.



The event is a fund raiser for the Harlow House. If you want to be on this year's invitation list, telephone the Harlow House, 661-2164 and leave your name and address. Cost is \$35 a person.

How to reach us:

Harlow House: (503) 661-2164.

E-mail:

troutdale_historical_society@juno.com

Senior Valentine Sweetheart Ball

Feb. 11
1-4 p.m.

Persimmon
Country
Club
Banquet Hall



Tickets of \$11.50
a person or \$20
a couple include buffet
luncheon and Burgie Crandall's
"Let's Dance Band. (A Table of
8, \$10 per person)

Purchase tickets at Troutdale
or Gresham city halls.