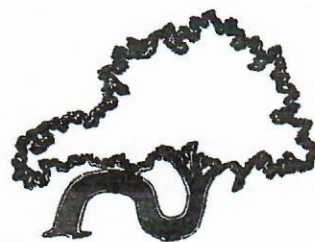


Bygone Times

A Newsletter of The Troutdale Historical Society.



JUNE AND JULY, 1991

EDITOR SHARON NESBIT, 665-0423

IT IS HERE...ICE CREAM SOCIAL TIME

Our biggest ice cream social ever, and an observance of the 75th anniversary of the Columbia River Highway will be Saturday and Sunday, June 15 and 16, at the Harlow House and in Troutdale City Park.

As a result, this newsletter is a big one, full of information on that event, tips on how you can help out and, because we will not have a July newsletter, a look ahead at our city picnic, some planning for our Harvest Faire, news about a new membership roster and all sorts of other good stuff. SO...READ ON!



ABOUT THE ICE CREAM SOCIAL...

The first obligation of every one who receives this newsletter is to clip out the handsome poster on the back page and post it somewhere so others can see it. We don't care if you are Charles and Edna Ellis in Hermiston or Shirley Loeffel in South Beach. Those places are close enough that folks just might consider coming. If you are as far away as Barbara Huston in Yuma, Ariz., then stick it in an envelope and send it to someone that you know would like to attend.

Your second job, if you live close enough to help out, is to call up and lend a hand. Can you wear a pinafore or one of our straw skimmers and greet guests? Can you clean berries at 5 p.m. on Friday or Saturday nights? Can you help serve? Or work in the historical society booth? Call Sharon Nesbit, 665-0423.

Can you host at the Harlow House? Call Lynda Harvey, 284-4224.

Can you help serve continental breakfast? Call Dorothy Sturges, 665-4896.

Will you bring flowers at 5 p.m. on Friday night for decorating? Call Mike and Pauline Morrow, 666-7228.

Do you have plants to donate? Let Marge Schmunk know at 666-7706.

Can you bake? Simply join us at the social and bring something for our bake sale in our booth out in the park.

NOTICE TO ALL VOLUNTEERS: In order to leave room for our guests, all Harlow House volunteers are asked to park at Troutdale City Hall and walk to the house. All park volunteers should either walk to the site or put their cars in the gravel lot pointed out by the parking attendant.

ABOUT OUR NEW ROSTER OF MEMBERS...

Thanks to some computer work from Cathy Moore of the Fairview-Rockwood-Wilkes Historical Society, we are just about ready to print our first ever roster of members of the Troutdale Historical Society. You should receive your copy in your August newsletter.

If you do not want your phone number listed in the roster, or if you wish to be omitted from it completely, please notify us by mail by July 1 so that we can make the changes. The request must be made in writing in order to avoid errors. Our address is on the back of your newsletter.

ICE CREAM SOCIAL SCHEDULE-June 15 and 16, Troutdale City Park - In celebration of the 75th anniversary of the Historic Columbia River Highway

Friday, June 14, beginning at 5 p.m. Set up, decorating, berry cleaning.

Saturday, June 15, 7:30 a.m. to 5 p.m.

Continental breakfast, buffet style outside great hall, 7:30 a.m. to 11 a.m.

Antique Tractor/Equipment show, Harlow House, 8 a.m. to 5 p.m.

Craft booths, 7:30 a.m. to 5 p.m. in park

Vintage Fashion show, continental breakfast, Great Hall, 10:30 a.m., Price \$5 members, \$6 others.

History/nature Walk, Harlow House and Depot Parks, noon.

Ice Cream Social, 12:30 to 5 p.m., Great Hall

Rail Depot Museum open, 1 to 4 p.m.

Seldom Six Dixieland Band, 1 to 4 p.m.

Sunday, June 16, 10 a.m. to 5 p.m.

Plant Sale, park grounds, 10 a.m. (Free plants for fathers)

Continental breakfast served buffet style outside great hall, 9:30 a.m. 11:30 a.m.

Craft booths, 10 a.m. to 5 p.m.

Antique Tractor/Equipment show, 10 a.m. to 5 p.m., Harlow House.

History/nature Walk, Harlow House and Depot Parks, noon.

Ice Cream Social, 12:30 to 5 p.m.

Rail Depot museum open, 1 to 4 p.m.

Swipsey Cakewalk Ragtime Band, 1 to 4 p.m.

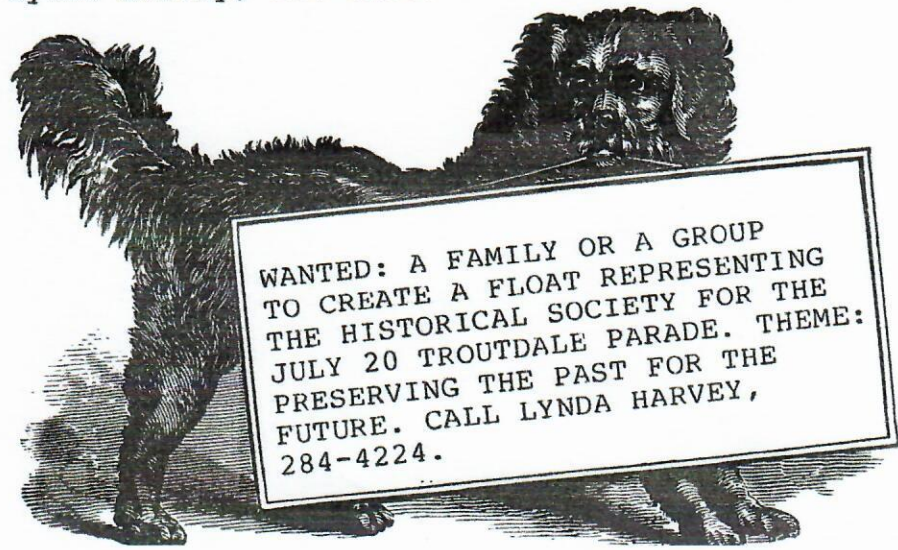
AND ON TO THE PARADE AND PICNIC...

July 20 is our annual Troutdale parade and picnic. Please note our ad for someone who would like to make a float for us.

The theme this year is "Gateway to the Future" and our own Roy Meger of the Troutdale General Store will be the Grand Marshal. This is the same weekend as Aero Fair at the Troutdale airport so lots will be going on. The parade assembly begins at 10:30 a.m. at Edgefield Manor. Events begin in the park at noon. We will have our usual hamburger booth. Dick Jones is building a new booth. If you can help out cooking or serving, call Lynda Harvey, 284-4224.

NOTICE:

With summer beginning, our Sept. 28 and 29 Harvest Faire is not far off. If you have antiques to sell and would like to rent a table for the two-day event, call Heidi Wilson, 667-9900.



WANTED: A FAMILY OR A GROUP TO CREATE A FLOAT REPRESENTING THE HISTORICAL SOCIETY FOR THE JULY 20 TROUTDALE PARADE. THEME: PRESERVING THE PAST FOR THE FUTURE. CALL LYNDA HARVEY, 284-4224.

THREE REAL PRIZEWINNERS...

At our May 19 meeting, special honors went to three people from our historical society who have made outstanding contributions to history.

Named member of the year, and promoted to our Board of Trustees, was Nancy Cox, a veteran of more than 20 years of volunteer work. When Heidi Wilson made the presentation, she described Nancy as, "caterer for the historical society." There is no way to count the cakes, the luncheons, the endless supply of food that Nancy has supplied, often with very little notice. She also is volunteer coordinator of Troutdale bingo and runs the kitchen at the annual ice cream social.

Many thanks, Nancy. You deserve it.

Rankin Davis, former board member, received a plaque with a photo of the Troutdale Rail Depot on it as our Preservationist, 1991. Rankin, who cleaned and supervised maintenance at the depot museum, also was volunteer there on a monthly basis. He is credited with the idea of a century club of \$100 donors for the society's museum barn, a fundraising effort that resulted in several thousand dollars in donations. And it is Rankin who said that he wants to build our barn museum because, "I want today's children to know what it was like to walk in a furrow behind your dad while he did the plowing."

Finally, David Ripma a new member and a new board member, received one of our historical plaques for his home, Sweet Brier Farm on Troutdale Road. David is the first private property owner in Troutdale to seek a historic resource zone for his property in order to protect it.

The Sweet Brier Farm plaque contains the following information:

This farm, originally part of the John Lewellyn and William B. Jones pioneer land claims, was purchased in 1888 as a rural retreat by Portland attorney Emmet Bigelow Williams. The black walnut trees lining Troutdale Road were planted by him in 1890.

An early-day commuter, Williams sped to his Portland office via Base Line Road (Stark Street) in a buggy pulled by a swift trotting horse. The farm was a post office in 1990-1901. His granddaughter, Helen Althaus, an attorney and Troutdale city councilor, lived at Sweet Brier until 1985.

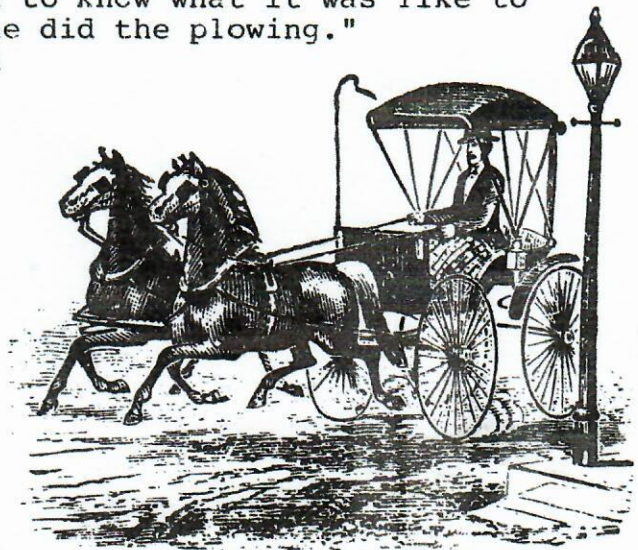
JOIN US FOR BARN WEDNESDAYS

Speaking of awards, congratulations to Bill Stone, who was named member of the year for the Fairview-Rockwood-Wilkes Historical Society. That is all the more remarkable because Bill also is one of the Troutdale Historical Society's most faithful volunteers and a frequent worker at our Barn Wednesdays.

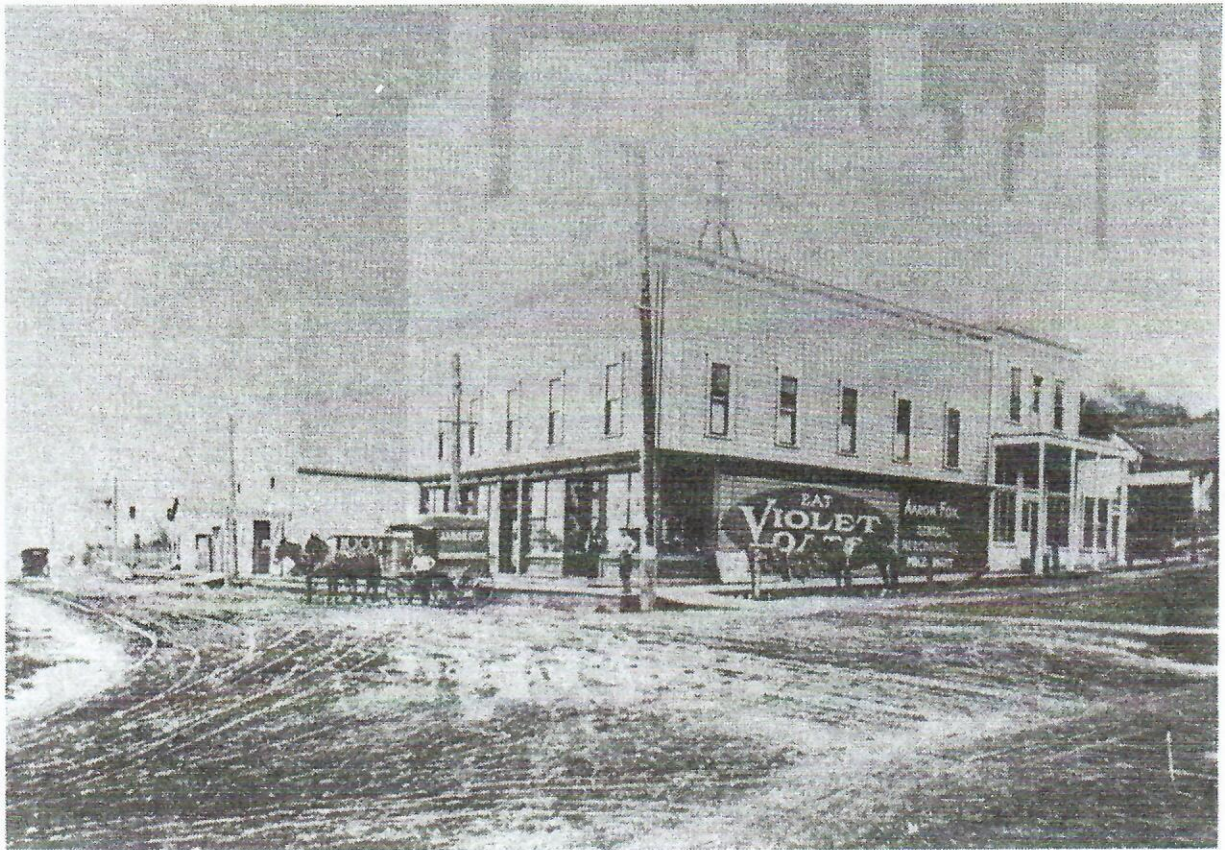
Barn Wednesdays are on the first and third Wednesdays of the month this summer, beginning at 9 a.m. There is always painting to do, weeds to trim, nails to pound. We have jobs geared to every skills. Barn Wednesday volunteers are credited at the rate of \$10 an hour for their work, so it is one way to earn the right to have your name woodburned on the barn beam as a major donor.

This summer, mark your calendar for these Barn Wednesdays: June 5, June 19, July 3, July 17, August 7, August 21, Sept. 4, Sept. 18.

If you have questions, call Dick Jones. 252-4306



FROM OUR PHOTO FILES...



Aaron Fox, Troutdale's first mayor, operated this store at the southeast corner of Columbia and Harlow streets prior to the Troutdale fire of 1907. The building at the extreme left, now the site of the present city hall, was the Missouri House, a boarding house. This row of buildings, including the livery at the left of the store, were destroyed in the 1907 fire. Aaron Fox's store was rebuilt in a new location and continues to this day as the Troutdale General Store.

Josephine Helming Jackson donated this photo numbered, BUI-22.

MUSEUM GRANT RECEIVED...

The Oregon Economic Development Department gave our society \$378.61 from their 1991 museum grant program. We were one of 81 museums in Oregon receiving money partially funded by Oregon lottery dollars.

The grant is awarded partly on the basis of attendance in the Harlow House museum and the number of hours that museum is open. It is interesting to note that the Harlow House had slightly over 2,000 visitors last year in the 549 hours it was open. Those numbers reflect large groups of people who came to the house during the May Volkswalk in Troutdale and the September Harvest Faire. But even in February, our museum had 39 visitors in eight afternoon open houses.

Attendance has been creeping up. In 1988 the museum hosted 1,316 visitors in the 426 hours it was open--3.08 visitors per hour. In 1989 we received 1,506 people in the 471 hours--3.19 visitors per hour. This year our guests averaged out to 3.65 visitors per hour.

D & D MANUFACTURING, 302 NE 2nd St., Troutdale, is a business member of the Troutdale Historical Society and a sponsor of this newsletter.

OUR MUSEUM HOURS...

We are in our summer museum season. If you have visitors and want them to see our museums, clip out this list and keep it handy.

HARLOW HOUSE MUSEUM
June 15 through September
Wednesday through Saturday, 1 to 5 p.m.
Sunday, 1 to 4 p.m.
Admission \$1
Troutdale Historical Society Members Free

TROUTDALE RAIL DEPOT MUSEUM
May through September
Saturday and Sunday, 1 to 4 p.m.
Occasional hours weekdays
No admission charge

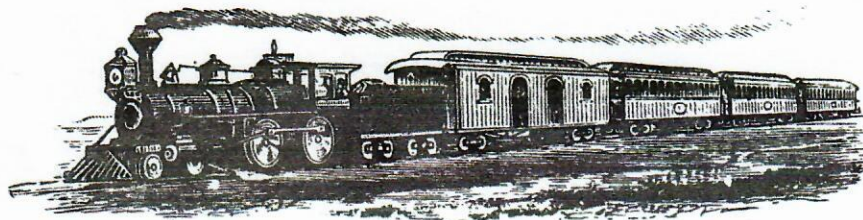
AND WHO IS DOING ALL THAT WORK?

Our Harlow House museum is open through the efforts of our curator Lynda Harvey, who works Wednesday through Saturday. Our Sunday hosts at the Harlow House are: MARY HUGHES; FRIEDA O'NEIL and WAYNE CHAMBERLAIN; HEIDI WILSON; DONNA HAWKINS; and substitutes, JACK and ROBERTA BURNS.

Our weekend hosts at the depot museum are: DAVID and SHARON LONGENECKER; EVELYN JACOBSON; MARTHA BOOHEISTER; CLARK and BESSIE CARNEY; VAL and KAY GOLDADER; PETER and RITA GIANCONE; MAXINE and VIRGIL CARMICHAEL; ED and EILEEN LINDSAY and LILY DICKINSON.

The best news is that we have offered the office space in the waiting room of the depot to the Troutdale Area Chamber of Commerce. During weekdays during the summer chamber staff members will try to keep the depot open from 10 a.m. to 2 p.m.

And we have a new twist in our museum. Ed Lindsay, working with bits and pieces gathered at garage sales, and about a million bucks worth of ingenuity, has put together a sound system of train sounds--whistles, bells and chugging steam engines--to give our museum a more authentic note.

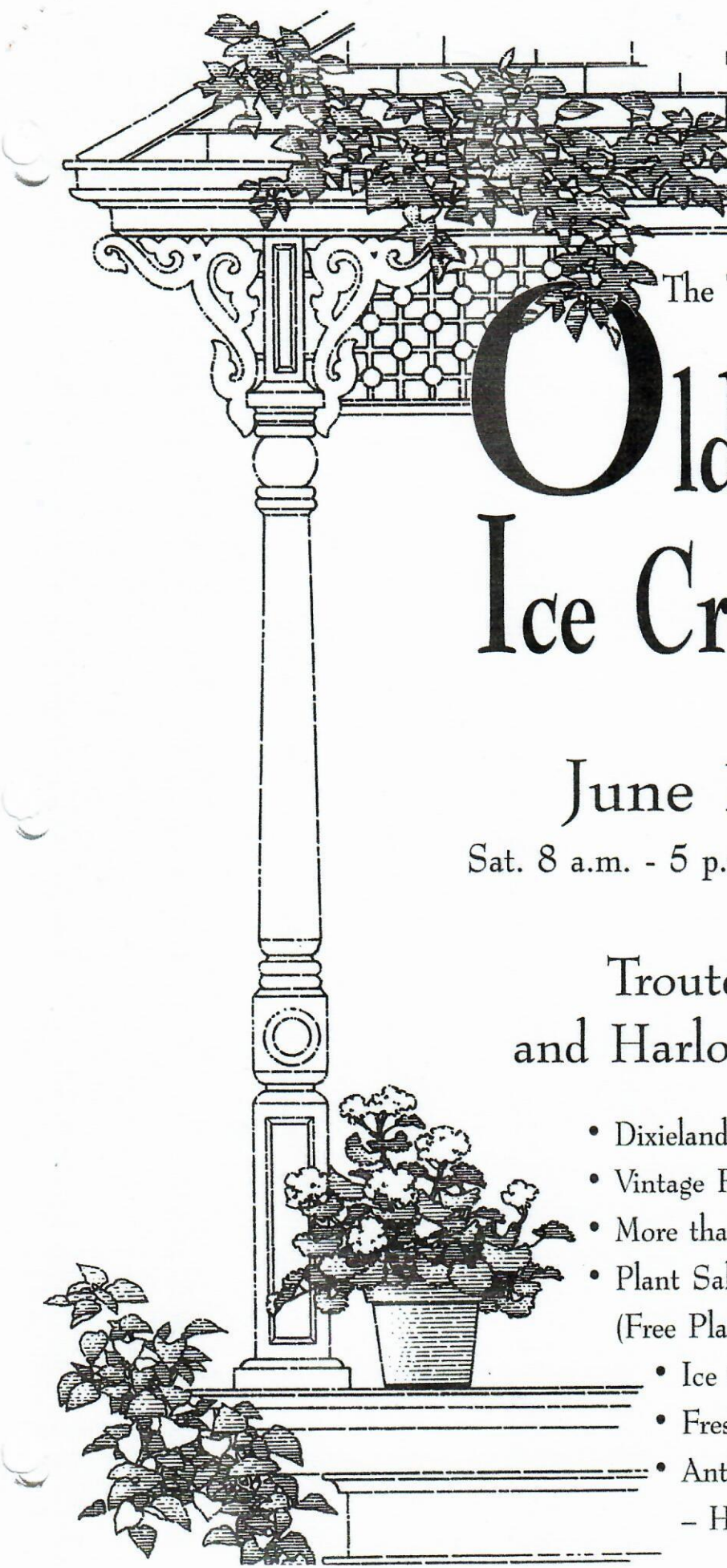


At the Harlow House, look for a new fancy curtain in the upstairs display room courtesy of Donna Kluehe. Be sure to see her fan display. Don't miss the special miniature wagon exhibit made by Charles Bishop that will be up in time for the ice cream social. And do stop during the ice cream social hours to see the miniature farm toys of Wayne Yoder of Aurora.

GREEN THUMB CLUB GETTING HANDS DIRTY...

While gray May days have made it tough on gardening, our Green Thumb club, the volunteer Harlow House gardeners, keep plugging away.

Watch for new changes in the herb bed, courtesy of CINDY HAMMOND. CATHY HAMME, CONNIE and JEFF VAN CLEAVE, JOYCE and LAUREN STOECKEL, JAMES and EILEEN FORD and fellow members of the TROUTDALE GRANGE, DONNA KLUEHE, ALEX JONES and BETTY KNIGHT all keep the place pretty.



75th In Celebration of the
Anniversary of the
Historic Columbia River Highway

The Troutdale Historical Society's
23rd Annual

Old Fashioned Ice Cream Social

June 15th & 16th

Sat. 8 a.m. - 5 p.m. — Sun. 10 a.m. - 5 p.m.

Troutdale City Park
and Harlow House Museum

- Dixieland and Ragtime Bands
- Vintage Fashion Show – 10:30 a.m. Saturday
- More than 40 craft booths
- Plant Sale – 10 a.m. Sunday
(Free Plants for Fathers)
- Ice Cream Treats
- Fresh Strawberries
- Antique Tractor and Equipment Show
– Harlow House Museum