



BYGONE TIMES

Newsletter of the Troutdale Historical Society

May 2003

Coming up at THS

Cemetery Tour *Sat. May 17*

Bus leaves Troutdale at 1 p.m. and returns 4 - 5 p.m. Stan Clarke guides us through four cemeteries and several graves of interest to historians.

Multnomah County Rural Fire Protection District #14

BREAKFAST

*June 7, 8 a.m. to Noon
Corbett Fire Hall*

Funds: Ferd Riehl Scholarship \$4.50 adult
\$2.50 child 10 & younger

Ice Cream Social

*Sat. & Sun. June 7 & 8
11 a.m. to 4 p.m.
Glenn Otto Park*

Free community event. Harlow House Museum and Depot Museum open both days from 11 to 4.

Salmon Cook-Off & Auction

*Sat. July 12 at 5 p.m.
Brickhaven B & B*

Call THS office
503-661-2164
for tickets (\$50)

Troutdale SummerFest Parade and Picnic

Sat. July 19

Downtown Troutdale and
Glenn Otto Park

Mark Your Calendar

Annual Cemetery Tour Set

The Troutdale Historical Society is offering a bus tour of local cemeteries conducted by historian and cemetery expert Stan Clarke. The bus will depart from the Rail Depot Museum located at 473 E. Historic Columbia River Hwy, east end of downtown Troutdale at 1 p.m. Saturday May 17.



This year's tour features four cemeteries in the vicinity of Riverview Cemetery in the Dunthorpe area of SW Portland. Several graves of interest to historians in nearby Greenwood Hills will be visited, as well as the I.O.O.F.

Reservations are not required and there is no charge, although a modest donation is solicited at the end of the tour to cover the cost of the bus and driver. Bus returns to Troutdale 4—5 p.m.

Steering Committee Presents Ice Cream Social

Ice Cream, as usual is the star of the show held at Glenn Otto Park in Troutdale. Booths lining the sidewalk throughout the park will feature a variety of arts and crafts for sale. Friends of Beaver Creek will host their annual native plant sale. There is a charge for ice cream, food and drink, but free admission to the park. Sat. and Sun. from 11 a.m. to 4 p.m. June 7 and 8.



QUILT RAFFLE

\$1 tickets on sale at all events this year...and in the office in the Depot.

Winner need not be present for drawing Dec. 6 at the Harlow House.



Interview with Scott Cunningham By Doneva Shepard

Sharon Nesbit's interview with long-time Troutdale resident, Scott Cunningham was done before a packed crowd at the April monthly meeting of the THS.

Scott was born in Maupin, Oregon and came to Troutdale in 1936 at the age of ten. Scott told of his young years living in the house behind the old church on the hill, the cold winters, the summers working in the strawberry fields, delivering milk and eventually a career in the frozen food business that spanned his adult life. Scott tells of his years at Troutdale grade school and Gresham High school, of the first folks he met upon arrival in Troutdale and the ones who became his life-long friends. He was only corrected a few times by long-time friend, Walt Nasmyth.

Scott tells of the summers his mother canned one thousand quarts of fruit, having come from Maupin where there was very little to can, his mother was overcome with enthusiasm at the lush fruit supply in

Troutdale area. He said he can remember more than once eating several quarts of his mother's home-canned peaches in an evening.



Some of Scott's best friends, the Fujii family, were victims of Japanese internment during World War II. Scott's family lived on the Fujii farm and carried on while their friends were gone. Scott talked about what that was like for everybody.

Scott Cunningham and Sharon Nesbit

Scott's sister and brother in law, Neil and Charlotte Owens were visiting from Bend and were able to attend the interview. Charlotte began her career as a World Famous American Folk Artist/Tole Painter when she lived in the Troutdale area. Charlotte and Scott both vividly remember the summers of berry picking to buy their school clothes.

The Video tapes of the Scott Cunningham interview are currently available at the Depot for \$15.

GENEALOGY RESOURCES

By Doneva Shepard

For those of us who are lucky enough to live in Multnomah County and have a Multnomah county library card, one of the finest resources for family research/genealogy is available to you (FREE) over the internet. The census for years: 1790, 1800, 1810, 1820, 1860, 1870, 1890 (fragments), 1910 and soon to be completed, 1920 are searchable with on-line images. Also, at this site you can search through historic rare books to find stories about your ancestors. Simply go to: <http://www.multcolib.org/ref/gene.html> and type in your library card number, without spaces, when asked for it.

The LDS/Mormons have the 1880 census available at their site: www.familysearch.org where you will also be able to search the Social Security death index, the Ancestral file, the International Genealogical Index (IGI) and Pedigree Resource file. On the top of the LDS/Mormon page you will see the option, "Family History Library catalog" where you can search for

films available through the local Family History center (closest one is on 181st across from Centennial High school) about your family or the place where they were from.

The 1850, 1900, 1920 and 1930 census is still only available at the subscription sites but if you are a member of the Troutdale Historical Society, you can request a look-up for free. Simply E-mail me at donevas@Yahoo.com and I will be glad to do a 'search' for you in these censuses.

www.cyndislist.com is a never-ending resource of genealogical material.

<http://www.glorerecords.blm.gov/PatentSearch/>: to search for early land records and Donation land claims.

<http://genealogy.state.or.us/start.lasso?location=search> for Oregon State Archives Historical Records (birth/death/marriage/1895 state census)

<http://globalgenealogy.com>: great for charts, forms, preserving, mapping, scrapbooking and everything a genealogist would absolutely love! There are other sites like this, but this is the best.

Seeing your grandparents or great-grandparents on a census living as children with their parents can be a real thrill. Good luck in your research!

The **Troutdale Historical Society** is looking for descendants of any of the people who participated in the Lewis and Clark trek west. If your family lines can connect to any of the members of the Lewis & Clark Expedition, please let us know. We would like to give you recognition and learn of your family's history since the expedition!

Jean Hybskmann and **Mike Dubesa** were both unanimously elected to the THS Board of Directors at the April board meeting.

Mike has served on the board in the past, was a prominent worker on the barn and smelt exhibit construction and is currently part of the Lewis & Clark exhibit team. We are happy to welcome him aboard.

Jean donates a tremendous amount of volunteer time to our society. She organizes the annual Tea and Tour, serves as a Tuesday Lady and is also part of the Lewis & Clark exhibit team. Jean has been involved in nearly every aspect of the society and her experience will be a great asset to the board of directors.

Lewis & Clark Exhibit Team Makes Progress

The Lewis & Clark exhibit team is at work in the barn. The focus for this exhibit is to recreate what the Corps of Discovery experienced, saw and learned while in our area. The research includes the native Americans that lived here, and their encounters with the Corps. Many local plants and animals were previously unknown to science in the 'United States' until discovered and documented by Lewis and Clark during their expedition.

Local artist, Kathy Allegri is nearly finished with a lovely mural depicting the mouth of the Quicksand River (Sandy River) at the time the Corps of Discovery hunted and explored in this area.

The book "Q is for Quicksand", written by Sydney Stevens and illustrated by Pat Fagerland tells the story from the journals beautifully and will be printed this

month. THS will supply classroom sets of this book to fifth-graders in our local schools.

A cedar tree has been located and donated by Dan Kerslake. At the barn, the shelter is being constructed in authentic plank house style by a volunteer crew organized by Dr. Jim Gurtison in Troutdale. Thus we will see and learn how canoes were carved by the native Americans through the research, expertise and demonstrations by our own native American carver Clifton Bruno.

The exhibit text and graphic panels are being designed and installed by member, Dan DeGraw, who is donating a great deal of time, talent and labor. In fact most of the work is being done by volunteer labor. The funds raised are needed for materials, image acquisition and the hope is to raise enough to do some hands on children's areas, which are expensive, but very educational.

Ben Hur Lampman

An April 20 historical article in The Oregonian, John Terry's Oregon Trails, tells the story of Ben Hur Lampman, acclaimed editorial writer, who started with the paper in 1916. At the time of his death in 1954, Lampman's splendid essays on the outdoors and fishing and Oregon life had earned him the title of Oregon's poet laureate.

Lampman also gave us part of our history. Drawn to the Sandy River like a trout to a fly, Lampman wrote often and well about the river and its neighborhood. His book, "Coming of the Pond Fishes," tells the story of Capt. Harlow and his trout ponds behind what is now the Harlow House and of Capt. Harlow's misguided attempt to introduce carp to the dining tables of Oregon.

In the early 1880s Harlow replaced the trout in his ponds at Troutdale with German Brown carp imported at a considerable cost from California. Harlow planned to farm-raise the carp and sell them to Portland restaurants. Before that happened, however, several thousand carp fry escaped from the ponds during a flood, launching the pesky invasion of the fish in Northwest streams.

In Remembrance...

Margery Smith

THS member Margery Smith died Dec. 15 at the age of 84. Margery spent 45 years of her life teaching. As a single parent, Smith made ends meet doing private tutoring with adults and high school students. The latter, she said, were like "lambs led to slaughter" weary of being clubbed over the head with books. She taught them to spell, regarding it as the reverse of reading, helped them build language out of words and letters printed on pieces of yardstick and even bribed them with a penny for each success and punished them for failures at two cents each. Margery retired in 1983. Her daughter Jeanne Berg, Portland is also a THS member.

Margaret Stitch

Margaret Stitch, an institution at Tad's Chicken N' Dumplings (which is an institution in its own right) died Jan. 26 at the age of 82. A longtime member of our society, Margaret was a waitress at Tad's for 46 years, a darned long time to be on your feet. She had lived in Troutdale many years and after her retirement was a regular at our Troutdale bingo game. Even in retirement, she always volunteered at Harvest Faire when Tad's cooked there, serving up chicken and dumpling dinners and visiting with all her old friends.

Landmark Home Razed

Troutdale lost a landmark April 26 when a small bungalow home at the southeast corner of Second and Harlow street was razed, apparently to make way for future construction.

The tiny house, pale green with white shutters, was likely one of the 1890s homes built when the city was first platted and, because it had not endured much remodeling, kept its original outlines and reminded us of what homes were once like on Troutdale's hillside.

This one had strong connections for several of our members. June McGinnis Sherman Nasmyth was born there to Morris and Gladys McGinnis, celery farmers. And many years later after June married John Nasmyth, John enjoyed pointing out that it was his 'honeymoon' house where he first lived with his first wife.

Our Thanks...THS wishes to thank the following for their support:

Gifts in Remembrance

Magic Touch Beauty Salon in Memory of Benny Sandiforth

Robert & Louise Dix in Memory of Walter Mackey

Nellie J. Hjaltalin in Memory of Walter Mackey

Margaret Splawn in Memory of Walter Mackey

Donations

Martha Booheister

Jean & Franklin Moore

Truly Wright

Lucille Tolbert

Dennis & Mary Bryson

Directors

Dennis & Mary Bryson

Lorraine Mackey

Troutdale Chapter

Of Eastern Star Marks Century

The Troutdale chapter of Eastern Star, affiliated with the Troutdale-Fairview Masonic lodge at the corner of Second and Dora streets, celebrated 100 years since it was first chartered on April 26.

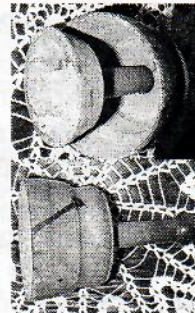
The early-day members of Eastern Star first started attending their meetings in horse and buggy days on the first Saturday after the full moon, apparently so there would be enough light to get home by. Memories of their last century included huddling around the stove in the drafty old lodge building, which once stood at the corner of the historic highway and Buxton Street, at what is now the parking lot of the Brass Rail Tavern.

Part of their historical collection is a box of thimbles they once used to make lap quilts for nursing home patients, as well as the badges and other items used by the order. The centennial observance included a reminiscence about life in Troutdale at that time. Many Troutdale residents were principals in the lodge, including Morris McGinnis, Herbert Bloyd, president of the bank and Harlow House resident, Laura Harlow.

A 75-year history of the Eastern Star and other mementos were donated to the historical society.

Answer will be in next newsletter

What is it?



THS Board
Ed Thiemann, President
Mona Mitchoff, Vice President
Jean Holman, Secretary
Tom Graves, Treasurer
David Ripma, Past President
Scott Cunningham
Terry Smoke
Mike Dubesa
Jean Hybskrmann
THS Volunteer Staff
Sheryl Maydew, Director
Mario Ayala, Office Manager
Mary Bryson, Curator
Doneva Shepard, Genealogist
Walter Nasmyth, Photo Librarian
Mary Bryson, Curator
Penny Balch, Grant Research
Marlene Burns, Accounting

Troutdale Historical Society
104 S.E. Kibling St.
Troutdale, OR 97060
Phone: 503-661-2164



Mission Statement:
To gather, preserve and make available material relating to the history of the community of Troutdale, the Columbia River Gorge and nearby area: To stimulate interest in, and knowledge of, the locality's past.

Change Service Requested

Bulk Rate
U.S. Postage
PAID
Troutdale, OR
Permit No. 5